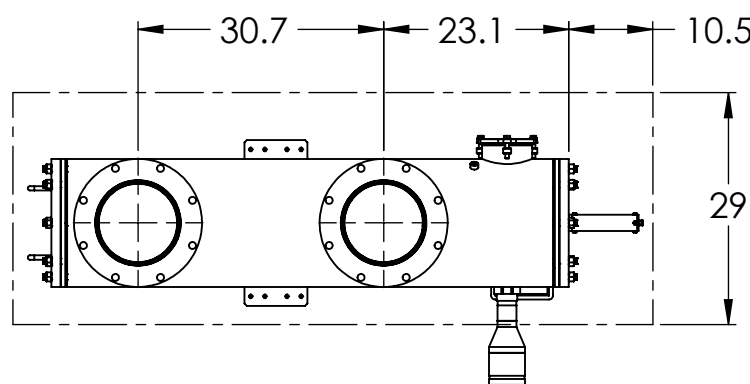
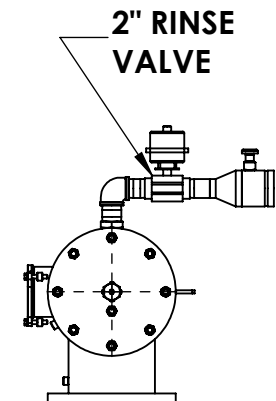
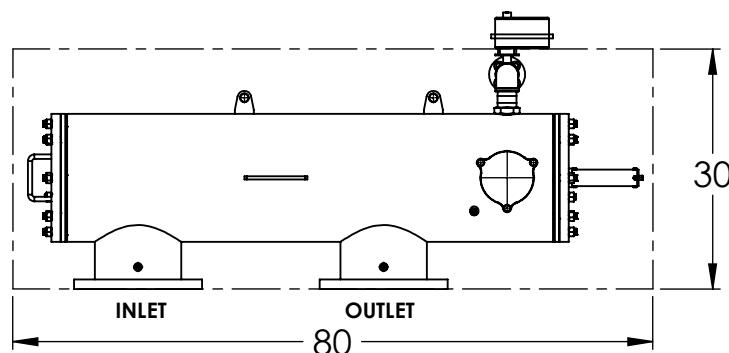
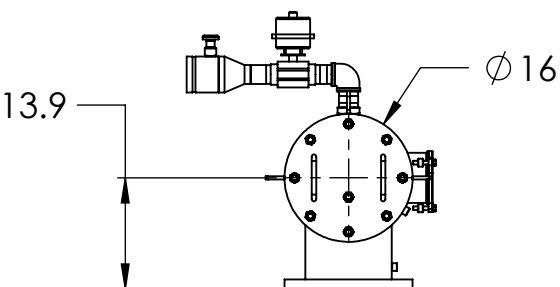


FREE SPACE REQUIRED FOR MAINTENANCE

FREE SPACE REQUIRED FOR INSTALLATION



TECHNICAL DATA

MAXIMUM FLOW RATE:	2000 G.P.M
AVAILABLE SCREEN SIZES:	10, 25, 50, 80, 100, 150, 200, 300, 400, 800, 1000, 1500 MICRON
OPEN SCREEN AREA STANDARD SCREEN:	614 SQ. INCHES
OPEN SCREEN AREA HIGH PERFORMANCE MULTI-LAYERED SINTERED SCREEN:	930 SQ. INCHES
MAXIMUM WORKING PRESSURE:	150 PSIG
MINIMUM INLET PRESSURE REQUIRED DURING RINSE CYCLE	30 PSIG
MAX. WORKING TEMPERATURE:	150°F
INLET/OUTLET FLANGES:	10" ASME B16.5 150# RF
DRAIN VALVE CONNECTION:	4" GROOVED
DRAIN HEADER SIZE:	4" MINIMUM
APPROXIMATE WEIGHT - DRY:	640 LBS.
APPROXIMATE SHIPPING WEIGHT:	780 LBS.
APPROXIMATE WEIGHT FULL OF WATER:	1015 LBS.

RAIN BIRD RESERVES THE RIGHT TO MODIFY FILTER DIMENSIONS WITHOUT PRIOR NOTICE

A	PART NO. EXPLANATION PART NUMBER XXXXXX-XX BASE DWG. NO. MFG OPTION (SEE TABLE or NOTE) EXAMPLE: 652100-01	NOTICE: THIS DRAWING EMBODIES A CONFIDENTIAL PROPRIETARY DESIGN ORIGINATED BY RAIN BIRD CORPORATION. ALL DESIGN, MANUFACTURING, USE AND SALE RIGHTS REGARDING THE SAME ARE EXPRESSLY RESERVED. IT IS SUBMITTED UNDER A CONFIDENTIAL RELATIONSHIP FOR A SPECIFIC PURPOSE AND THE RECIPIENT AGREES BY ACCEPTING THIS DRAWING NOT TO SUPPLY OR DISCLOSE ANY INFORMATION REGARDING IT TO ANY UNAUTHORIZED PERSON, OR TO INCORPORATE IN OTHER PROJECTS ANY SPECIAL FEATURE UNIQUE TO THIS DESIGN. ALL COPYRIGHT AND PATENT RIGHTS HERETO ARE EXPRESSLY RESERVED.	1 INCH DO NOT SCALE DRAWING LAST MODIFIED IN: SOLIDWORKS 2017 FILENAME: HO-I-10-PS-C.3LDDRW	UNLESS OTHERWISE SPECIFIED: .X = ±.030" .XX = ±.015" .XXX = ±.005" .XXXX = ±.002" X° = ±1° X.X° = ±0.5°	DRAWN AKTIS DESIGNED AKTIS SUPERCEDES NONE SCALE 1:24 & NOTED	DATE 07-07-2020 DATE 07-07-2020		PHASE PRELIMINARY DESIGN DESIGN CONTROL FIRST USED ON SBU PLANT PROJ. NO. PROJ. NAME	A
	TITLE AUTOMATIC SELF CLEANING FILTER - HO-I-10-PS-C							A SIZE DWG. NO.	A.01 REV.
	SHEET 1 OF 1								
	COMMON SYMBOLS: R RADIUS C CRITICAL TO FUNCTION Ø DIAMETER () REFERENCE								