

RC-4Bi  
RC-7Bi  
RC-1260Bi  
Instruction  
Manual

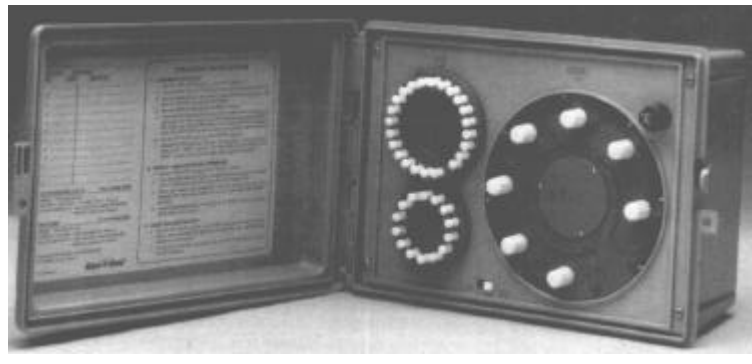
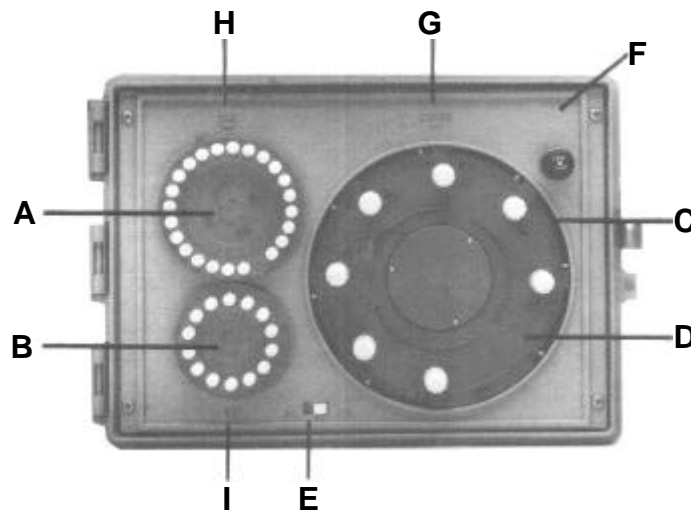


Figure 1



**RC-7BI MODEL SHOWN**

(The RC-4Bi has a 20-minute pause position between station #4 and "REST.")

**DESCRIPTION OF CONTROLS** Refer to Figure 1

**A. HOUR DIAL with 23 CYCLE START PINS:** The HOUR dial contains 23 pins for scheduling automatic "Starts" on any hour (except midnight—which is day changeover time). Embossed characters provide quick identification for each hour, AM or PM, noon and midnight. Captive type pins are designed for simple push-pull operation.

**B. DAY DIAL with 14 SCHEDULING PINS:** The calendar DAY dial contains 14 captive pins for scheduling irrigation everyday or any day within a two week range. Each pin represents a 24 hour period beginning at midnight. Embossed characters are on the dial, adjacent to each day of the week.

**C. STATION SELECTOR/INDICATOR DIAL:** The STATION selector/indicator dial contains the timing controls (D) for each of the stations. The dial automatically rotates during a watering cycle with the current station appearing at the top, under the station pointer. REST indicates the system is off and no watering is taking place. The dial is also used for manual selection of any station for semi-automatic operation.

# Special Upgrade Offer

Save an extra 15% off new sprinkler timers and irrigation controllers at the Rain Bird Online Store.\*

Still struggling with your old sprinkler timer? Having a hard time complying with local watering restrictions? Upgrading to a new Rain Bird sprinkler timer is easier than you might think.

New timers are easier to program than ever before, with powerful features to help save you time and water while keeping your yard healthy and vibrant.

There are lots of models to meet your needs, including indoor and outdoor versions, flexible modular timers and even smart controllers that automatically adjust themselves based on the weather.

Shop Now at [store.rainbird.com](http://store.rainbird.com) and enjoy exclusive upgrade savings!



Enter discount code:

**UPGRADE15**

at checkout to save an extra 15% off\*

*\* Additional discount not valid on clearance items, bundles or store specials. Discount applies to controller products only. Cannot be combined with other store discount codes. Valid at the Rain Bird Online Store only. Subject to change without notice.*

**RAIN  BIRD®**

**D. STATION TIME CONTROL KNOBS:** Individual TIME controls for each station. Timing is adjustable up to 60 minutes to suit all landscape growth requirements. A small white arrow moves with each knob along the timing scale on the Station dial (C) for visual indication of the time setting. The scale is marked-off in 5 minute graduations and the ratchet action of the knob provides for precision adjustment with each "notch" representing one minute increments. The OFF position eliminates the station from the watering schedule. All omitted stations are automatically rapid-advanced to the next timed station.

**E. OPERATIONAL MODE SWITCH:** The 2-position MODE switch provides the operating control for the system, AUTO position for automatic irrigation as scheduled and "timed" watering of a manually selected station. The OFF position is used for rainy weather shutdown. This position eliminates controller "output" to the system valves *without* interrupting the clock operation.

**F. FUSE:** 1.5 AMP (Slow Blow fuse) protects the controller from damage due to current overload. Replace fuse after the source of trouble has been remedied.

**G. CURRENT STATION INDICATOR:** STATION indicator identifies the current position of controller operation. See control (C).

**H. CURRENT TIME INDICATOR:** TIME indicator identifies the current time on the controller clock.

**I. CURRENT DAY INDICATOR:** DAY indicator identifies the current day of the watering schedule.

## INSTALLATION

The controller is housed in a cabinet suitable for convenient indoor wall mounting. Four mounting holes are provided through the back surface of the cabinet. Before mounting the controller, consideration must be given as to accessibility, protection from water, electrical power source and connections to the system control valves.

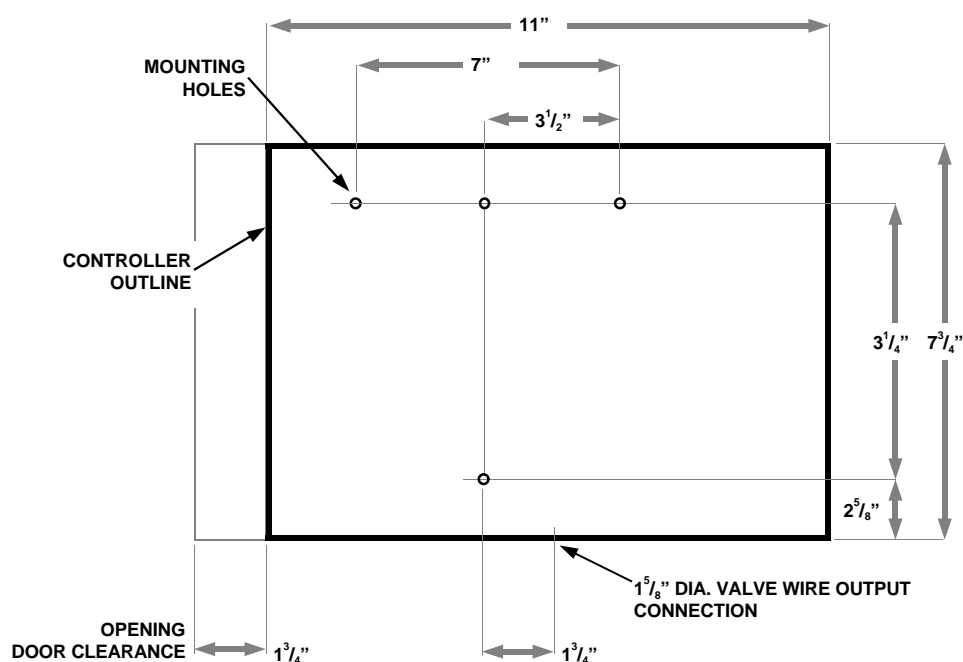


Figure 2  
CONTROLLER MOUNTING

## MOUNTING

1. Choose a location that provides a minimum clearance of 13" wide x 8" high. Since the electrical connections are provided at the bottom of the cabinet, clearance should be allowed for the conduit connections etc. Refer to Figure 2. The location must be within 5 feet of an electrical outlet.
2. Remove the 4 panel mounting screws, and carefully lift out the panel.
3. Position the cabinet on the wall at the mounting location, and with a pencil, mark the mounting holes desired (4 holes are provided) on the wall. Two vertical holes are provided for mounting to a wall stud. (**Note:** Use #10 screws).

## ELECTRICAL CONNECTIONS

ALL WIRING MUST BE INSTALLED AND CONNECTED IN ACCORDANCE WITH LOCAL CODES. A basic wiring diagram, with color code identification is provided on the inside surface of the cabinet for easy reference.

A 1/4" dia. hole is provided in the bottom of the cabinet for insertion of the transformer input wire. See Figure 4.

### Valve Output Wiring

The controller transformer provides 24 VAC output for the station valves. The output leads are color coded and stamped with the corresponding station designations. (See Figure 3.)

1. Connect one Lead from each valve to the desired station output lead using wire nuts.

**NOTE:** If the Master Valve/Pump Start circuit is used, connect only one Rain Bird, 2 watt, solenoid valve per station.

2. Connect the second lead from all valves to the white common output lead. Record the valve locations or landscape zone identification for each station on the label inside the cabinet door.

### Master Valve Wiring

1. Connect one lead from a 24 VAC Master Valve to the controller Master Valve lead (Wht/Orn).

2. Connect the other Master Valve lead to the controller common (white) along with the valve common leads.

**CAUTION:** If a master valve is not being used, be sure to tape the end of the Master Valve lead to prevent any possibility of "shorting."

OUTPUT LEAD	COLOR CODE
Station 1:	Brown
2:	Red
3:	Orange
4:	Yellow
5:	Green
6:	Blue
7:	Violet
8:	Gray
9:	White
10:	White/Blk
11:	White/Bm
12:	White/Red
Master Valve:	Wht/Orn
Valve Common:	White
(2) Transformer:	Wht/Red
Wht/Red w/ "line input" label	
Wht/Brn w/ "line input" label	

Figure 3

## Instructions for Attaching Plug-In Transformer.

Prior to plugging the transformer into a 120 VAC wall receptacle, insert the wire through the  $\frac{1}{4}$ " hole in the lower left corner of the controller, tie an overhand knot in the wire about 5" from the end (inside the case). This will prevent inadvertent disconnection of the wire. Connect one orange wire to the wht/red wire with the "line input" label and connect the other orange wire to the wht/brn wire with the "line input" label. (See Figure 4)

Now, plug transformer into wall receptacle.  
(**Note:** International transformer is not "plug-in" type.)

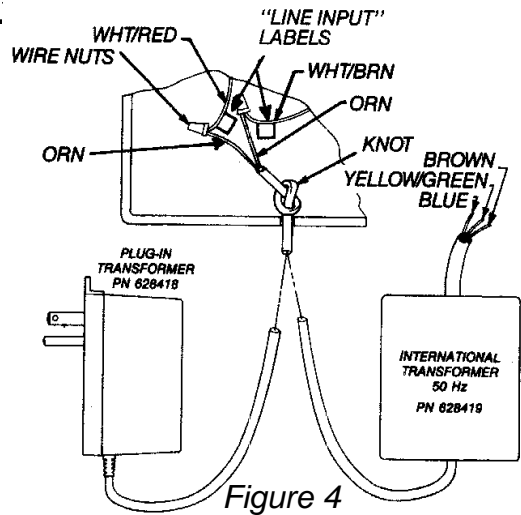


Figure 4  
ATTACHING TRANSFORMER TO  
CONTRLLER

## Electrical System Checkout

1. Rotate the STATION dial counterclockwise to position REST at the top directly under the Station pointer.
2. Pull all pins on the HOUR and DAY dials to the "out" position.
3. Put the MODE switch in the AUTO position.
4. Make sure transformer is plugged into a wall receptacle.
5. Adjust each station TIME control to the 5 minute mark. (See Figure 6.)
6. Rotate the STATION dial (counterclockwise) to position Station 1 under the pointer. Watering should commence shortly as the automatic mechanism latches with the Station dial.

The 5-minute interval should provide sufficient time to observe control valve operation. If more time is required, simply adjust the timing knobs as necessary. The controller will advance through each station, in sequence, providing opportunity to observe each circuit for proper operation.

Upon satisfactory checkout of the system, proceed to adjust the controller clock.

## SETTING THE CONTROLLER

With the main power ON, proceed to adjust the clock for the correct time and day.

1. Put the MODE switch in the OFF position.
2. Rotate the HOUR dial (clockwise only) to position the current time opposite the TIME pointer at the top of the panel. Observe the dial for the correct AM or PM numerals.

**Example:** If the correct time is 1:35 PM, position the dial such that the TIME pointer will point midway between the 1 and 2 numerals on the PM side of the dial. If a more precise adjustment is desired, the best procedure would be to push-in the pin corresponding to the upcoming hour (in this example, the 2 PM pin) and *on that hour*, slowly rotate the dial until you hear the "click" of the micro-switch.

3. Proceed to set the present day by rotating the calendar DAY dial to position the correct letter opposite the DAY pointer at the bottom of the dial.

4. Next, rotate the STATION dial in a counterclockwise direction to position REST at the top under the STATION pointer. This completes the controller clock setting.

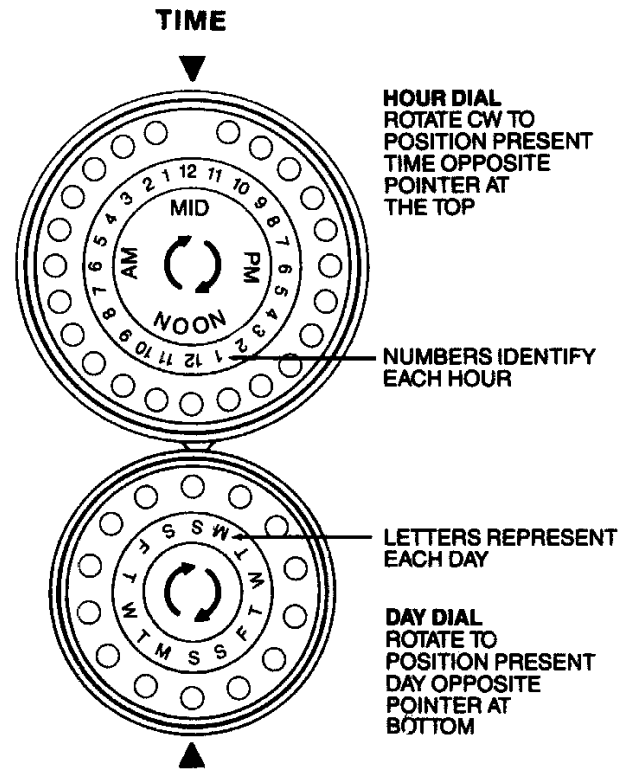


Figure 5  
CONTROLLER CLOCK

## SCHEDULING AUTOMATIC OPERATION

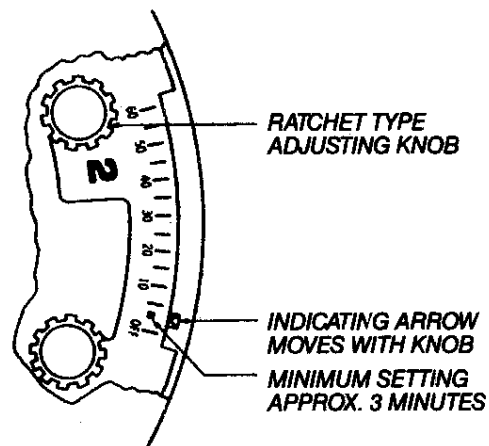
Make sure the HOUR and DAY dials are set to the correct time and that all pins are in the "out" position.

1. Push in the pin(s) corresponding to the day(s) on which watering is desired. Remember, each DAY pin represents a 24 hour period beginning at midnight.
2. Next, select the desired starting time(s) and push in the corresponding pin(s) on the HOUR dial.
3. The first mark (square dot on the station dial) is the minimum time setting and represents approximately 3 minutes. The small white arrow moves with the knob for visual indication of each setting. (There will be no valve output when the arrow is positioned between "off" and the "square dot.") The ratchet notches represent 1 minute increments for precise settings. The OFF position at each timing dial, omits the station from the schedule.

**NOTE:** The minimum accumulated cycle time required to *prevent* a second start within a given hour is 20 minutes. Conversely, the maximum accumulated time to *permit* a cycle start on a consecutive hour is 55 minutes. Total cycle time of more than one hour is permissible.

**NOTE:** It takes about 20 minutes for the hour dial pin that started a watering cycle to move off the cycle-start switch behind the face panel. To make sure the RC-4Bi will not start another cycle when the combined running time of stations 1 through 4 is less than 20 minutes, the controller will stop at the non-existent station #6 position and time out 20 minutes before returning to "REST."

This completes the automatic setting of the controller. Move the MODE switch to the AUTO position. The controller will now automatically control the landscape irrigation according to the



**Figure 6**  
STATION TIME CONTROL

## SEMI-AUTOMATIC OPERATION

The controller may be operated at any time in a semi-automatic mode simply by turning the STATION dial counterclockwise to position the desired station at the top, just *ahead* of the Station pointer. Allow the automatic mechanism to advance into the desired timing zone. The selected station will operate for the time set on the dial, after which, the remaining stations will follow in sequence until the REST position again appears under the Station pointer.

## RAIN SHUTDOWN

There may be occasions where it is desired to interrupt all landscape irrigation. Conditions such as rainy weather, system repair, landscape renovation, or other excavation work. The temporary shutdown of the system is accomplished by moving the MODE switch to the OFF position. This eliminates controller output to the valves without interrupting the controller timing circuitry. The controller will not operate either automatically or semi-automatically. A summary of the operating instructions is provided on the label inside the controller door.

## MAINTENANCE

The controller is designed to provide years of trouble-free service. The controller requires no preventative maintenance or lubrication. Should trouble occur, refer to the Troubleshooting chart for possible remedies, or contact your local authorized Rain Bird dealer.

## TROUBLESHOOTING CHART

<b>DIFFICULTY</b>	<b>POSSIBLE CAUSE</b>	<b>REMEDY</b>
<i>Clock stopped.</i>	<b>a.</b> Blown fuse	<b>a.</b> Replace fuse. If controller stops again, check system circuits to locate trouble.
	<b>b.</b> No power to controller.	<b>b.</b> Check line voltage and connections at each end.
	<b>c.</b> In the RC-4Bi, the station dial may be in the 20-minute pause position between station 4 and rest.	<b>c.</b> Let controller time out for 20-minutes and return to "REST" automatically.
<i>DAY and HOUR dials function incorrectly.</i>	<b>a.</b> Clock set for incorrect time. <b>b.</b> Pins incorrectly set.	<b>a.</b> Reset clock for the "present" time. <b>b.</b> Check pin settings and "accumulated cycle time on station dial.
<i>DAY and HOUR dials function, but cycle will not start automatically.</i>	<b>a.</b> MODE switch in wrong position.	<b>a.</b> Move switch to AUTO position.
<i>Controller recycles immediately without stopping in the REST position.</i>	<b>a.</b> Insufficient cycle time allowed. <b>b.</b> Total cycle time coincides with a succeeding START pin.	<b>a.</b> Adjust cycle time for more than 15 minutes. <b>b.</b> Reset the HOUR pins or readjust the accumulated cycle time.
<i>Some stations do not operate.</i>	<b>a.</b> Station time set at OFF. <b>b.</b> Faulty valve wiring.	<b>a.</b> Set TIME control for more than 3 minutes. <b>b.</b> Check connections between controller and valves. Also, check valve actuators.
<i>Station dial does not stop at a "Timed" station</i>	<b>a.</b> Insufficient time set on dial.	<b>a.</b> Adjust the TIME control for more than 3 minutes.

Should trouble be isolated in the controller mechanism, remove the entire panel assembly from the cabinet and return to your local distributor for repair.

**THANK YOU** for your expression of confidence in Rain Bird Sprinkler Mfg. Corp. As the world's leading manufacturer of irrigation systems and components, our efforts are directed to providing you with the finest quality products and components available today.

Your new Controller has been designed using proven technology. You will find it simple to use. We are confident that you will enjoy many years of reliable, trouble-free operation. This manual describes the Controller's functions in detail. We invite you to read it thoroughly so that you may use your Controller to its maximum capability.

Again, thank you for providing Rain Bird with the opportunity to meet your irrigation needs.



**Customer Support Center**  
6640 S. Bonney Ave. Tucson, AZ 85706  
1-800-RAIN-BIRD