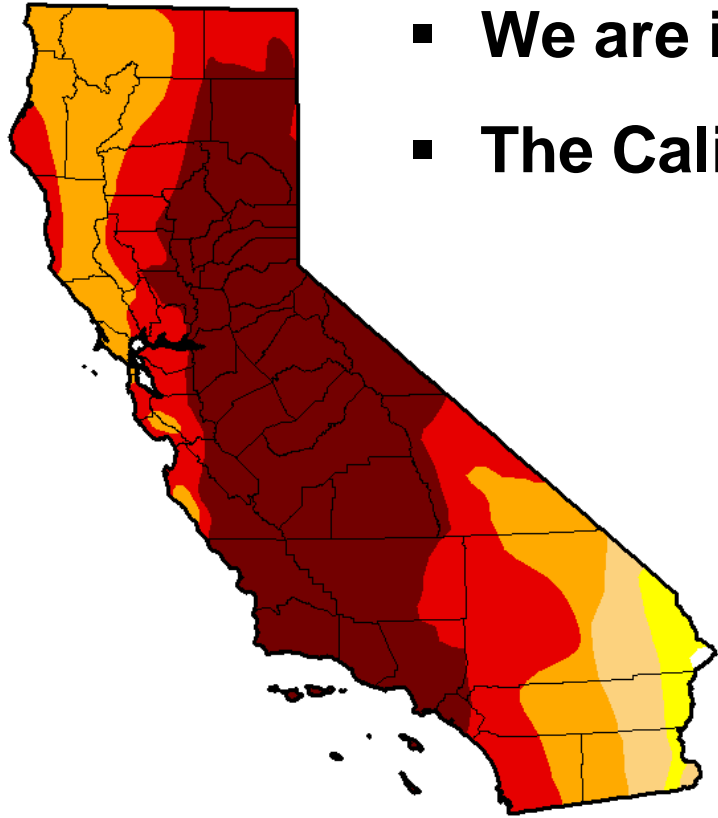




Rain Bird's 25 Ways to Save 25%

The Intelligent Use of Water.™

The Situation



- **We are in an unprecedented drought.**
- **The California government has responded.**
 - **Governor's Executive Order:**
 - Achieve 25% reduction in water use
 - **Prohibitions put in place:**
 - No runoff
 - No irrigation within 48 hours of rain
 - **Water restrictions* enforced:**
 - 2 days per week
 - No irrigation during the day

* These are statewide restrictions. Additional restrictions vary by location. Check with your local water provider for details in your area.



- **Together, we can make a difference.**
- **We believe that saving water is a responsibility that we all share.**
- **Our industry can have a tremendous impact on water conservation by installing more efficient systems and teaching customers how to use them correctly.**

Our Responsibility

- To educate our customers.
- To be stewards for sustainable landscapes.

Our Opportunity

- To generate new revenue streams with existing customers.
- To upsell more profitable, high-efficiency products.



**Our response today will shape
our industry's future.**

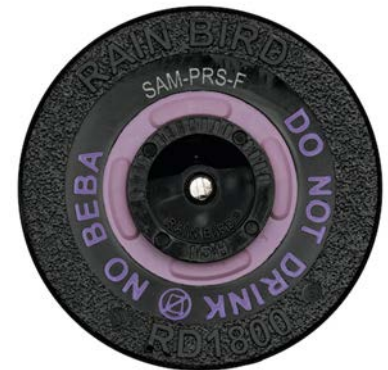
Simple Upgrades Make a Big Difference



Smart Controllers



Pressure Regulation



Check Valves



High Efficiency Nozzles



Sub-surface Drip



Spray-to-Drip

Rain Bird's Proven Water Savers

Water Savings from 25 – 80%



- **Look for this sticker on boxes of high efficiency Rain Bird products.**
- **Save your customers 25 – 80% on their outdoor water use.**

Rain Bird Smart Controllers

Residential Solutions

Commercial Solutions



ESP-SMTe

SMRT-Y



ESP-LX Series with IQ



IQ Platform™

Rain Bird ESP-SMTe

Water Savings Up to 70%

- **Easy to Install**

- Weather sensor is easily wired to the controller using two quick-connect terminals.

- **Easy to Operate**

- Programming is fast and intuitive thanks to easy-to-follow setup wizard, minimal dial positions, and English or Spanish.

- **Easy to Sell**

- The ESP-SMTe provides a 30-70% water savings to your customers.

ESP-SMTe



www.rainbird.com/esp-smte

Rain Bird SMRT-Y

Water Savings 40% or More

- **Makes Any Irrigation Controller “Smart”**
 - Precisely monitors moisture levels. Unaffected by soil temperature or electrical conductivity.
- **Water Savings of 40%+**
 - Optimizes the amount of moisture at the root zone for a healthier landscape.
- **Advanced Soil Moisture Sensing Technology**
 - Checks soil conditions every 10 minutes.



Rain Bird IQ Platform™ for Remote Water Management

Water Savings Up to 60%

■ Convenient

- Manage your entire system from anywhere anytime.
- Compatible with ESP-LXME and ESP-LXD.

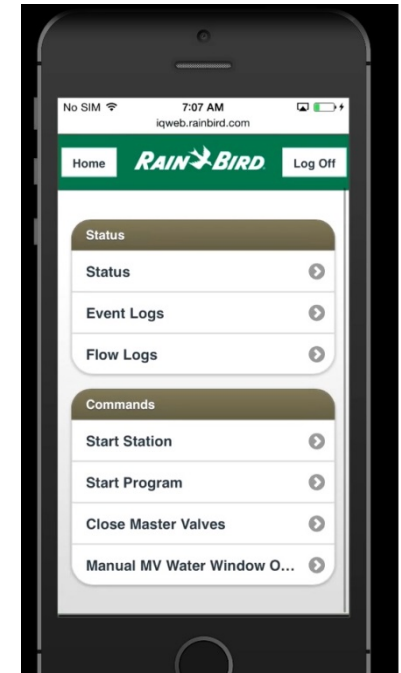
■ Labor and Water Savings

- Quickly and remotely make controller adjustments and use ET-based scheduling to save water.



■ Peace of Mind

- Sleep well at night knowing that IQ is monitoring your system and the information you need is at your fingertips.



Pressure Regulation

Sprays



Rotors



Valves



Drip Filters



Optimal pressure delivers instant water savings.

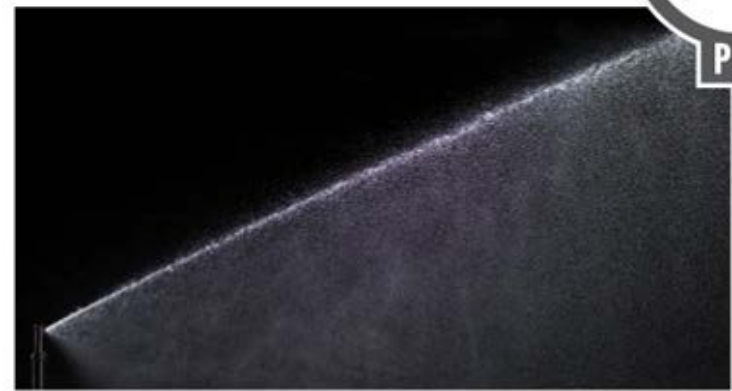
Rain Bird Pressure Regulating Sprays & Rotors

Water Savings Up to 25%

- **Quantifiable Savings**
 - Save approximately one gallon per minute per rotor or spray.
- **Minimizes Wind Drift**
 - Larger water droplets resist wind drift and evaporation, so you always hit your target zone.
- **Protection from Mayhem**
 - If a nozzle is damaged, PRS can also reduce water waste by up to 70%.



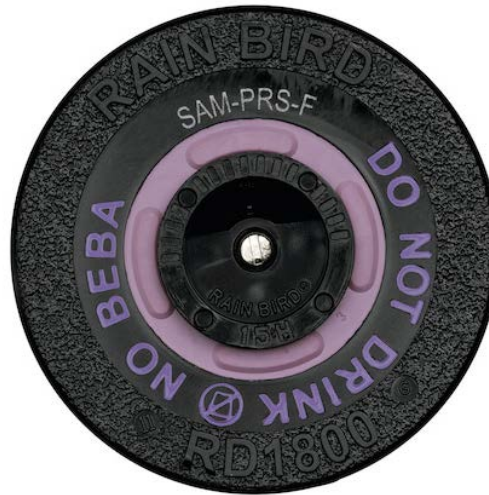
Without PRS



With PRS



Rain Bird Pressure Regulating Sprays



RD1800 Series:

- Best-in-class performance
- Non-potable version designed to stand up in harsh reclaim water.

1800 Series:

- Industry standard

Maximize your savings by combining pressure regulation and check valves.

Rain Bird Pressure Regulating Rotors



5000 Series Plus PRS

- Exclusive Flow Optimizer™ Technology
- Featuring flow shut-off



5000 Series PRS

- Exclusive Flow Optimizer™ Technology

Rain Bird PRS-Dial

Water Savings Up to 25%

- **Maintains Constant Pressure**
 - Regulates zone water pressure with one device for water savings as high as 25%.
- **Simple Installation**
 - Dial makes installation and adjustment quick, easy and accurate.



- **Maximum Flexibility**
 - Fits all Rain Bird PGA, PEB, PESB, PESB-R, EFB-CP and BPE valves.

Rain Bird Pressure Regulating Control Zone Kits

Water Savings Up to 25%

- **Efficient Low Volume Performance**
 - Assures downstream emitters are performing optimally while protecting fittings from failure.
- **Increased Reliability**
 - Fewer threaded connections mean less chance of leaks.
- **Easier Installation**
 - Include a matched set of components in one convenient package.



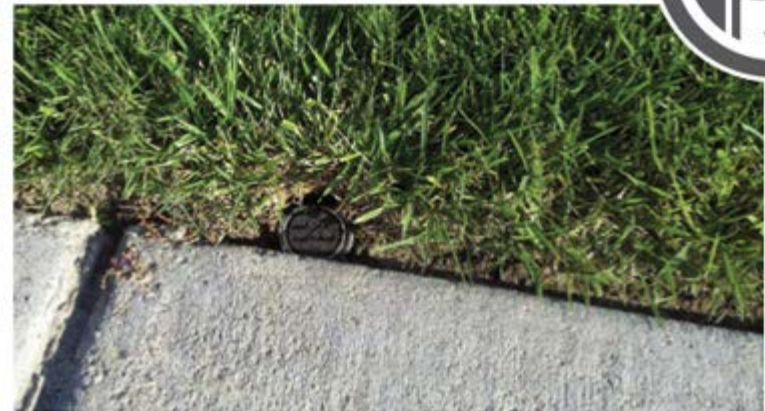
Rain Bird Sprays & Rotors with Check Valves

Water Savings Up to 50%

- **Stops Water Waste**
 - Holds back water up to 14 feet to prevent flooding and erosion.
 - Perfect for sloping sites.
- **Reduces System Wear**
 - Minimizes water hammer during start-up.
- **Reduces Labor**
 - Built-in Seal-A-Matic™ (SAM) check valve eliminates the need for under-the-head check valves that are difficult to maintain.
 - No parts to be installed at the site.



Without SAM



With SAM



Rain Bird XFCV Dripline with Check Valve

Water Savings Up to 50%

■ Stops Water Waste

- 3.5 PSI check valve holds back water up to 8 feet to prevent flooding and erosion.
- Eliminates the need to re-charge the line at the beginning of each cycle.

■ Improved Uniformity

- Keeps the dripline charged assuring all plants receive uniform coverage.

■ Reduces Labor

- Greater flexibility enables tighter turns with fewer elbows.



Rain Bird High Efficiency Nozzles

HE-VAN



U-Series



R-VAN



R-Series



All Rain Bird high efficiency nozzles exceed
65% DU_{LQ}

Rain Bird HE-VAN & U-Series Nozzles: Tight Watering Windows

Water Savings of 25% or More

- **Save Water and Money**
 - Superior coverage and close-in watering reduces run times by up to 35%.
- **Superior Wind Resistance**
 - Large water droplets reduce misting and airborne evaporation so the right amount of water is delivered to the right place.
- **Ideal for Tight Water Windows**
 - Faster run time to meet local water restrictions.



Rain Bird R-VAN & R-Series Nozzles: Low Precipitation Rate

Water Savings of 30% or More

- **Great for slopes.**
 - Lower precipitation rate reduces run-off and the potential for erosion.
- **Water Lands Where It Should**
 - Strong streams and larger water droplets fight wind and reduce misting and airborne evaporation, so more water is delivered to the target area.
- **Maximum Flexibility**
 - Available in both fixed arc and variable arc models.



Rain Bird Low Volume (Drip) Irrigation

Water Savings Up to 80%

- **Healthier Landscapes**
 - Deliver water at or near the plants' root zones.
- **Water Savings**
 - Up to 80% over traditional overhead sprinklers.
- **Everything You Need**
 - With over 150 products, Rain Bird has the broadest drip irrigation product line in the industry to meet any site requirements.



Control Zone Kits



QF Dripline Header



Emitters



Dripline

Rain Bird XFS Dripline with Copper Shield Technology

Water Savings Up to 80%

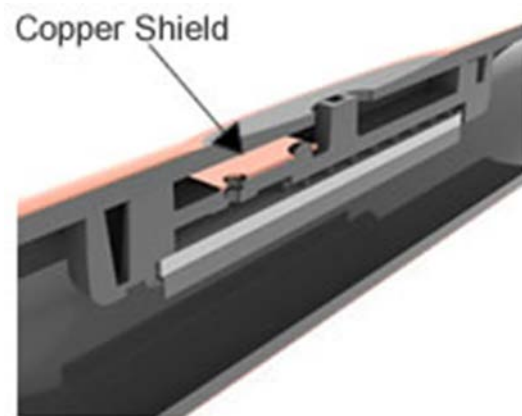
■ Reliable

- Copper Shield Technology protects the emitter from root intrusion.
- Root protection delivered without the use of harsh chemicals.



■ Multi-purpose

- XFS may be used under turf or shrub and groundcover areas.



Rain Bird 1800 Retrofit Kits

Water Savings Up to 80%

■ Simple Installation

- No digging or underground plumbing required.

■ Optimal Performance

- 30 psi pressure regulation and 200-mesh screen that is easily accessible.

■ Targeted, Efficient Solution

- Delivers water directly to the root zone to stimulate plant growth.



Local Rebates

- Help your customers pay for these upgrades with local rebate programs.
- Visit <http://25Ways.RainBird.com> for links to your local agency rebate programs.



Model Water Efficient Landscape Ordinance (MWELo)

Effective December 1, 2015.

Projects Subject to MWELo:

- **All projects that require a building or landscape permit, plan check or design review AND meet the following criteria:**
 - **New development projects:** Aggregate landscape area \geq 500 sq. ft.
 - **Rehabilitated landscape projects:** Aggregate landscape area \geq 2,500 sq. ft.

MWELO Highlights

- Automatic irrigation controllers using ET or soil moisture sensor data are required.



MWELO Highlights

- Rain, freeze and wind sensors are required, as needed for local climate.



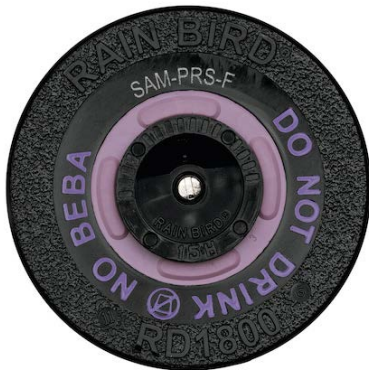
- Flow sensors that detect high flow are required for all non-residential landscapes and residential $\geq 5,000$ sq. ft.



MWELO Highlights

- Pressure regulating devices are required.
- Check valves or anti-drain valves are required where low head drainage could occur.

RD1800 SAM-PRS



1800 SAM-PRS



5000 SAM-PRS



XFCV Dripline



MWELO Highlights

- **No overhead irrigation within 24 inches of any non-permeable surface.**
- **Low volume (drip) irrigation is required in mulched planting areas.**
- **Areas less than 10 ft. in width in any direction must be irrigated with subsurface irrigation or another means that produces no runoff.**



MWELO Highlights

- All emission devices must meet the requirements of ASABE/ICC 802-2014.
- All sprinkler heads must document a lower quarter distribution uniformity (DU_{LQ}) of 65% or higher.
- Emission devices must have matched precipitation rates.



Tools & Resources

- <http://25Ways.Rainbird.com/saleskit>
 - Customizable contractor tools to promote more efficient irrigation solutions.



Conversion to Drip Irrigation Reduces Water Consumption

RAIN BIRD'S 25 WAYS TO SAVE 25%

WATER SAVINGS UP TO 80%



BEFORE	AFTER
<p>Spray Irrigation</p> <p>Wasteful overspray and runoff. Impacted by wind and evaporation.</p> <p>Squanders Water Resources</p>	<p>Drip Irrigation</p> <p>Delivers water directly to the root zone to stimulate plant growth.</p> <p>Targeted, Efficient Solution</p>

How Much Does It Save?

Key quality for money-back rebates in your area!

Installing drip irrigation devices will reduce your water consumption by up to 80% while maintaining the health of your plants.

Quick Facts:

- A low volume drip irrigation system applies water slowly, at or near the roots of your plants, greatly reducing water loss due to evaporation.
- Conversion to drip means no more wasted water on sidewalks, structures, fences, cars, etc. No more concerns about being identified as a water waster.
- Conversion to drip irrigation means targeted watering only where you need it resulting in less weed growth.




Overhead Irrigation



Drip Irrigation

Up To 80% Water Savings



RAIN BIRD'S 25 WAYS TO SAVE 25%

Learn how one simple change could save thousands of gallons of water.

Aprenda cómo un simple cambio podría ahorrarle miles de galones de agua.

WATER SAVING TIPS
Text: 25WAYS to 555888

Contact me to learn more:
Póngase en contacto conmigo hoy mismo para obtener más información:

Take a permanent break from over-watering

RAIN BIRD'S 25 WAYS TO SAVE 25%

RAIN BIRD

WATER SAVING TIPS
Text: 25WAYS to 555888

RAIN BIRD'S 25 WAYS TO SAVE 25%

Use water wisely.

Water Saving Tips: Text: 25WAYS to 555888

RAIN BIRD

Questions?