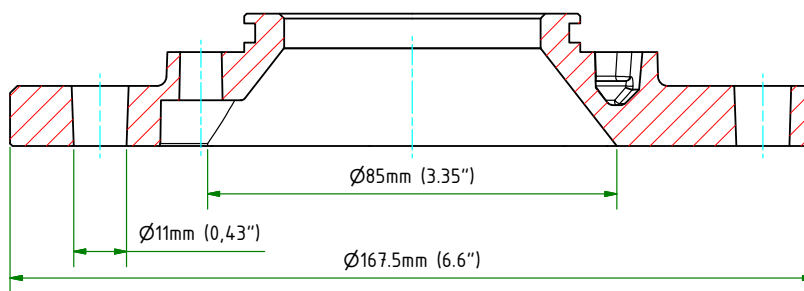
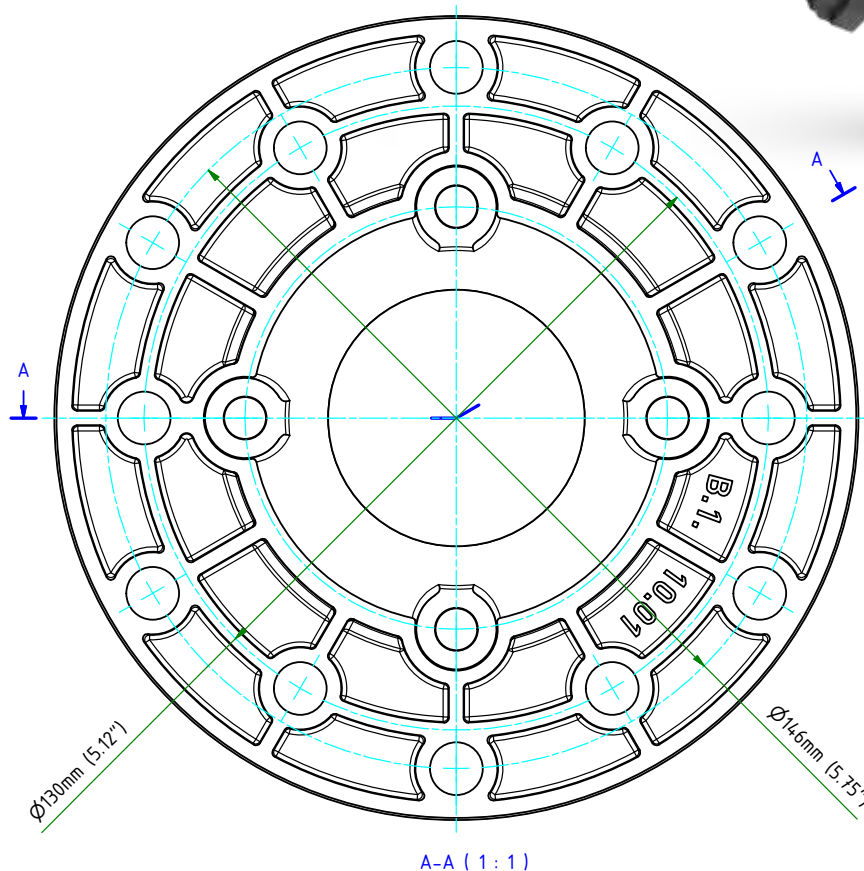


XLR SERIES WATER JETS

Flange Dimensions



Mating Flange: External $\text{\O}168$ mm (6.61"), 6x $\text{\O}11$ mm (0.43") on a $\text{\O}130$ mm (5.12") bolt circle and 6x $\text{\O}11$ mm (0.43") on a $\text{\O}146$ mm (5.75") bolt circle with a $\text{\O}85$ mm (3.35") thru hole.