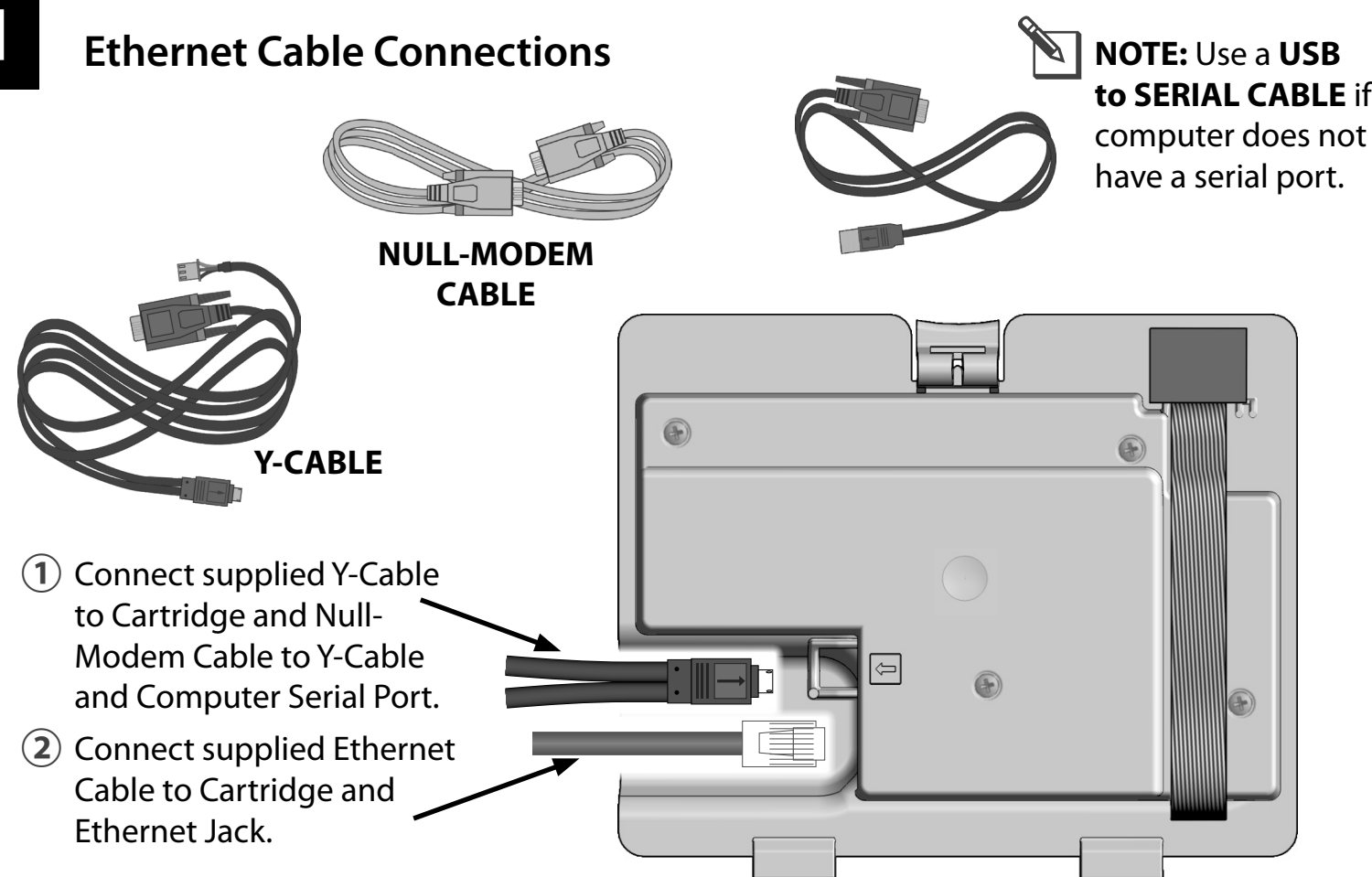


Work with the Site IT Network Personnel to setup the following:

- 1 Setup a Network Static or Reserved IP Address and a unique Port Number for each IQ Satellite Controller.
- 2 Provide the Network Subnet Mask and Gateway Address.
- 3 Provide the Internet IP Address for the Router/ Fire Wall.
- 4 Setup Port Forwarding (or Dynamic DNS) so IQ-Cloud can connect to the Network Router and be forwarded to the individual IQ Satellite Controllers.

NOTE: Inbound communication from IQ-Cloud (Amazon Server) to the site network will come from 50.18.203.7

1 Ethernet Cable Connections

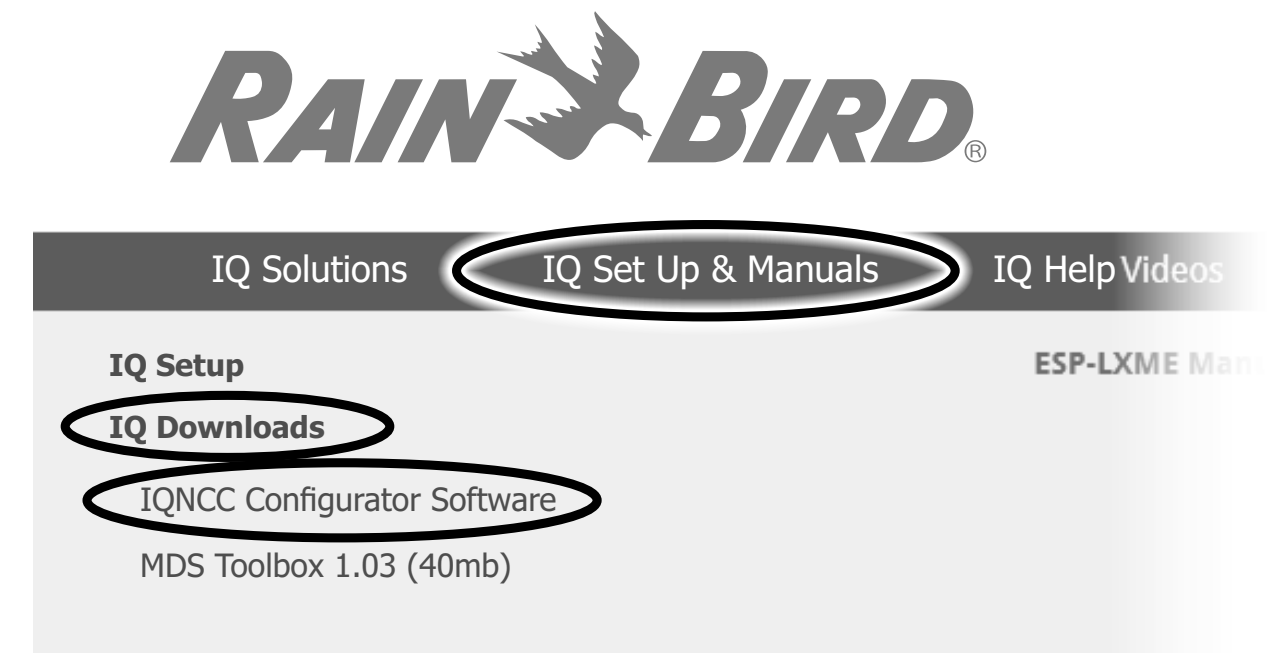


- 1 Connect supplied Y-Cable to Cartridge and Null-Modem Cable to Y-Cable and Computer Serial Port.
- 2 Connect supplied Ethernet Cable to Cartridge and Ethernet Jack.

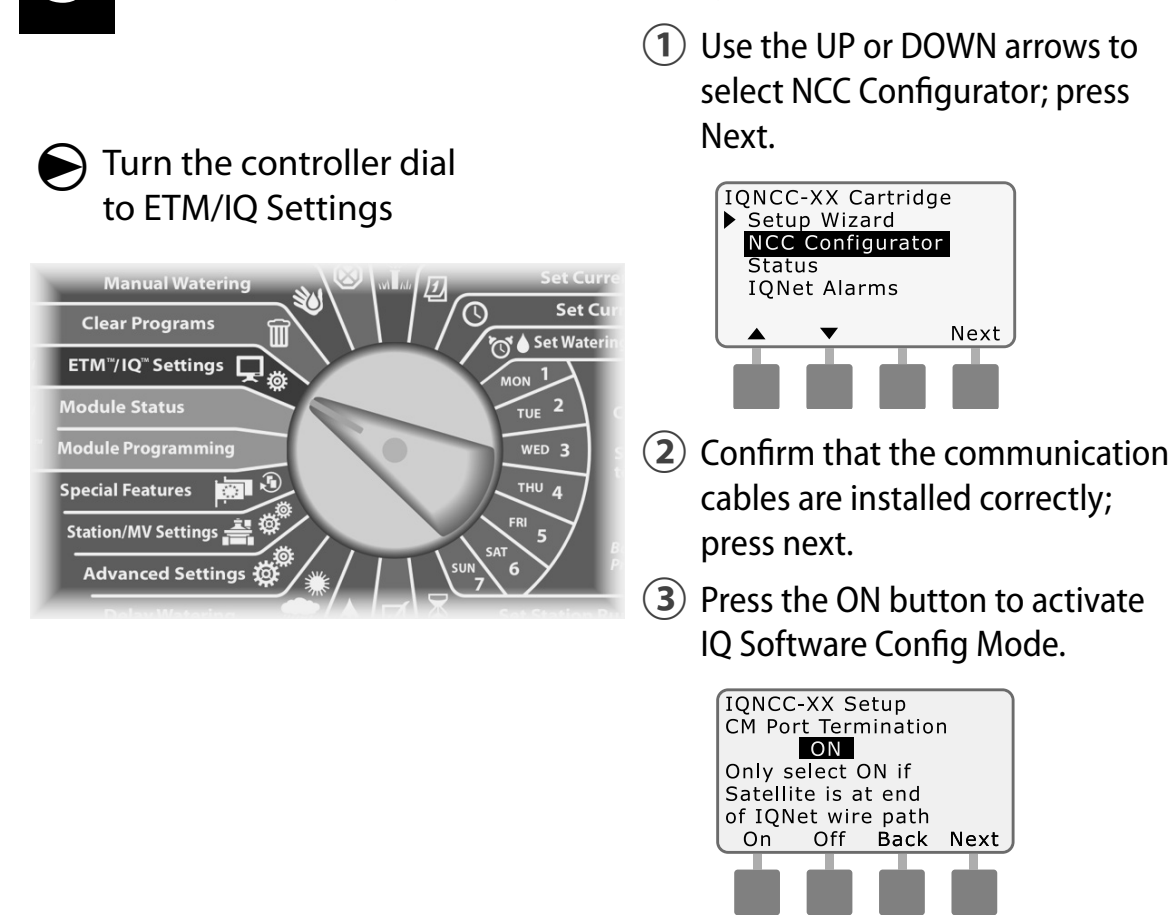
2 IQ-NCC Configurator Software

- Go to www.rainbird.com/IQ, download, extract, and install the software on a Windows computer.

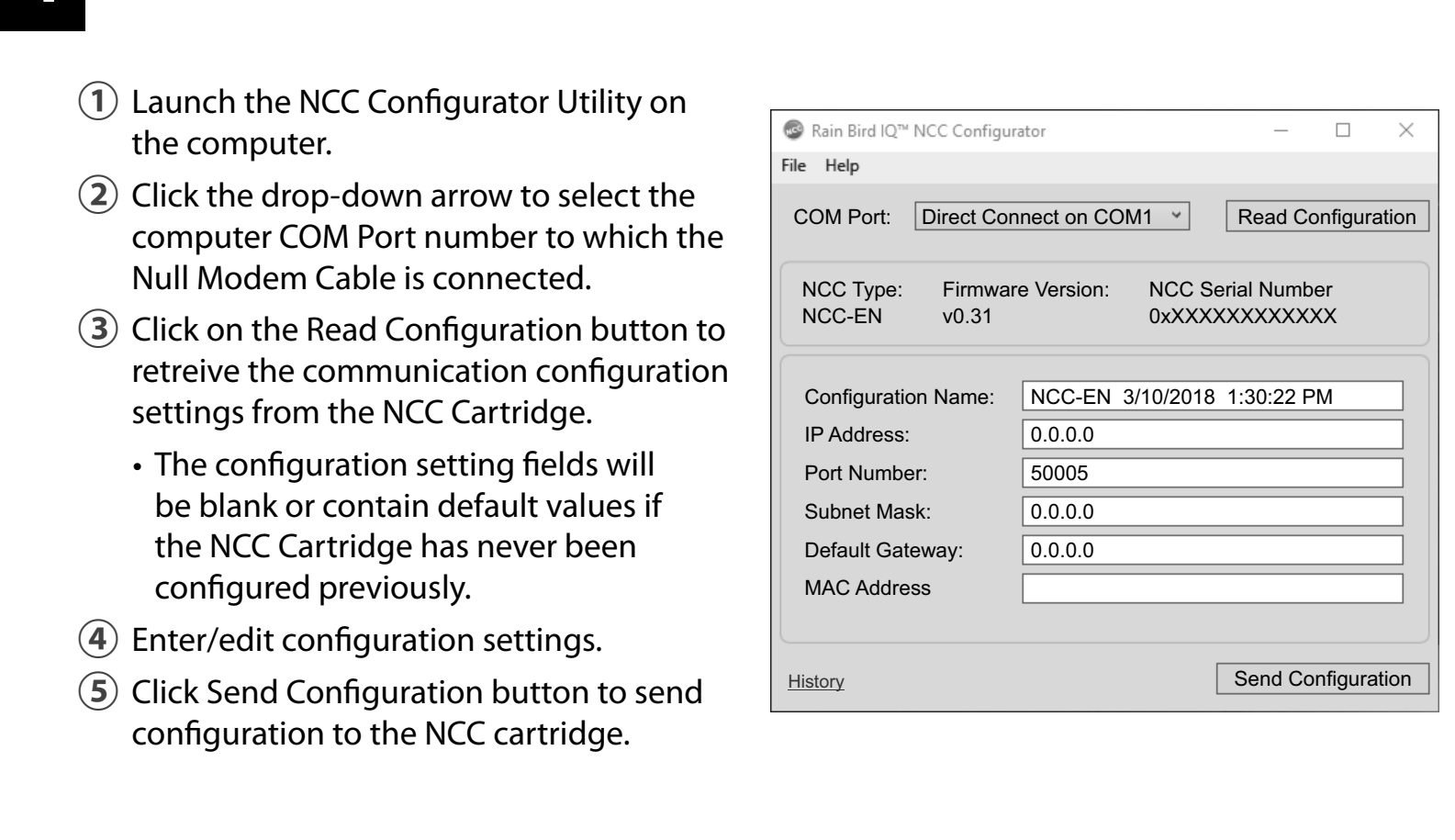
IQ-Cloud Support » (800) 254-0692 | iqcloudsupport@rainbird.com



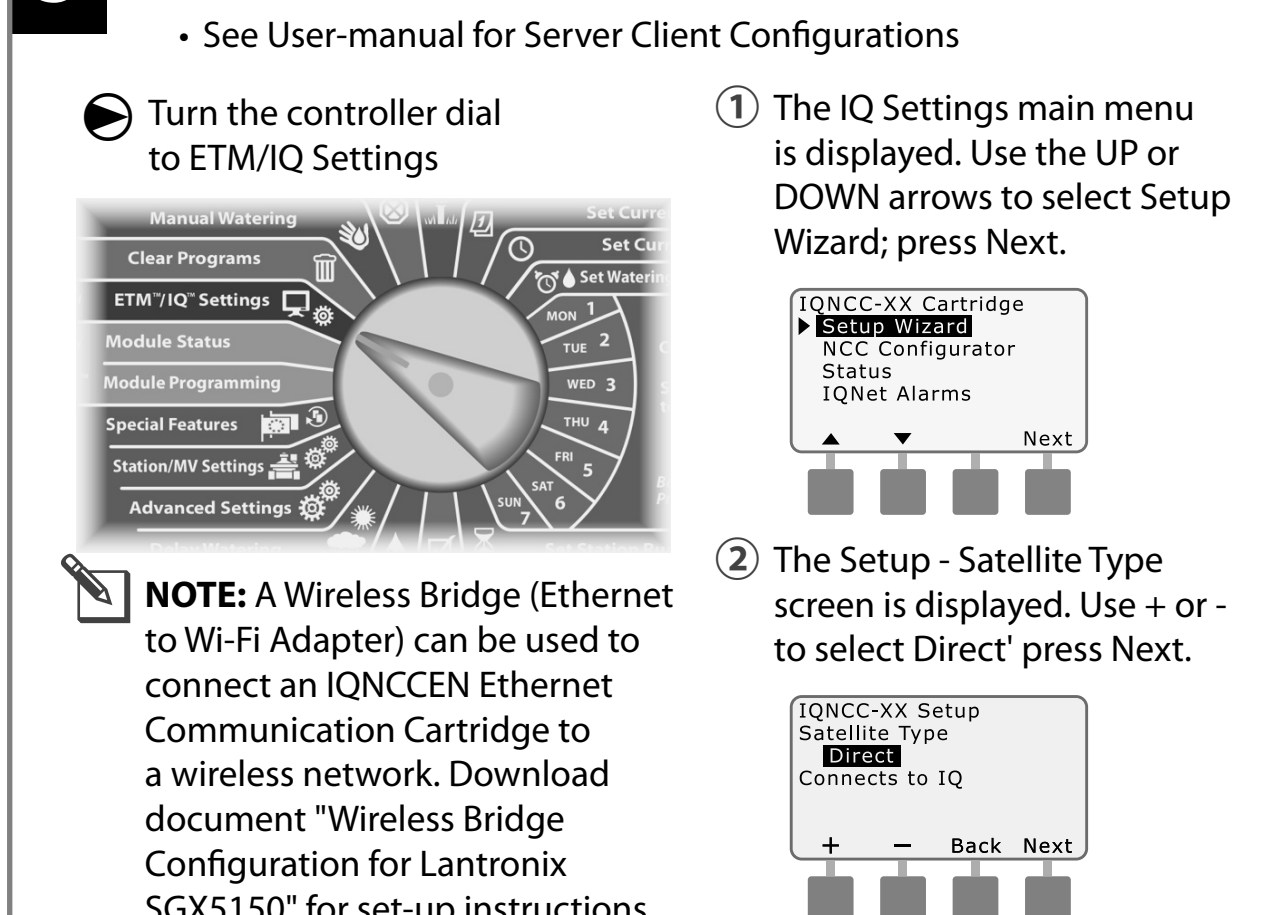
3 Set Cartridge to NCC Configurator Mode On



4 Use the NCC Configurator Software to Configure the Ethernet Settings

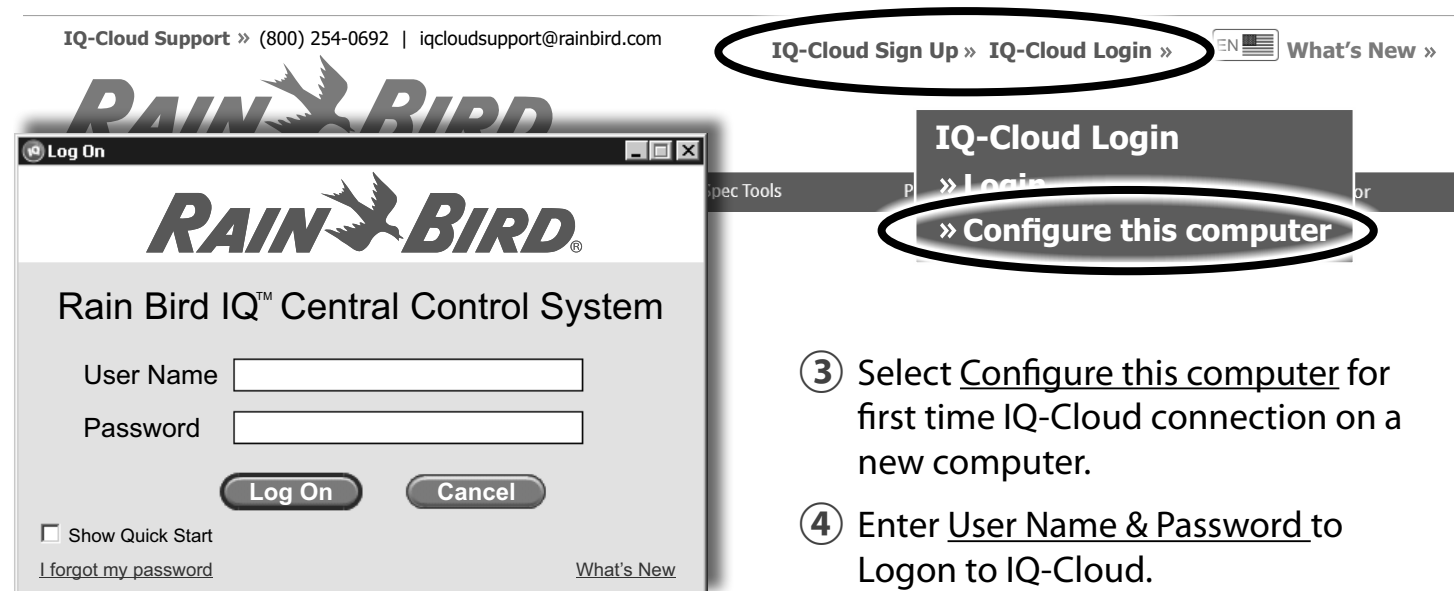


5 Configure Cartridge

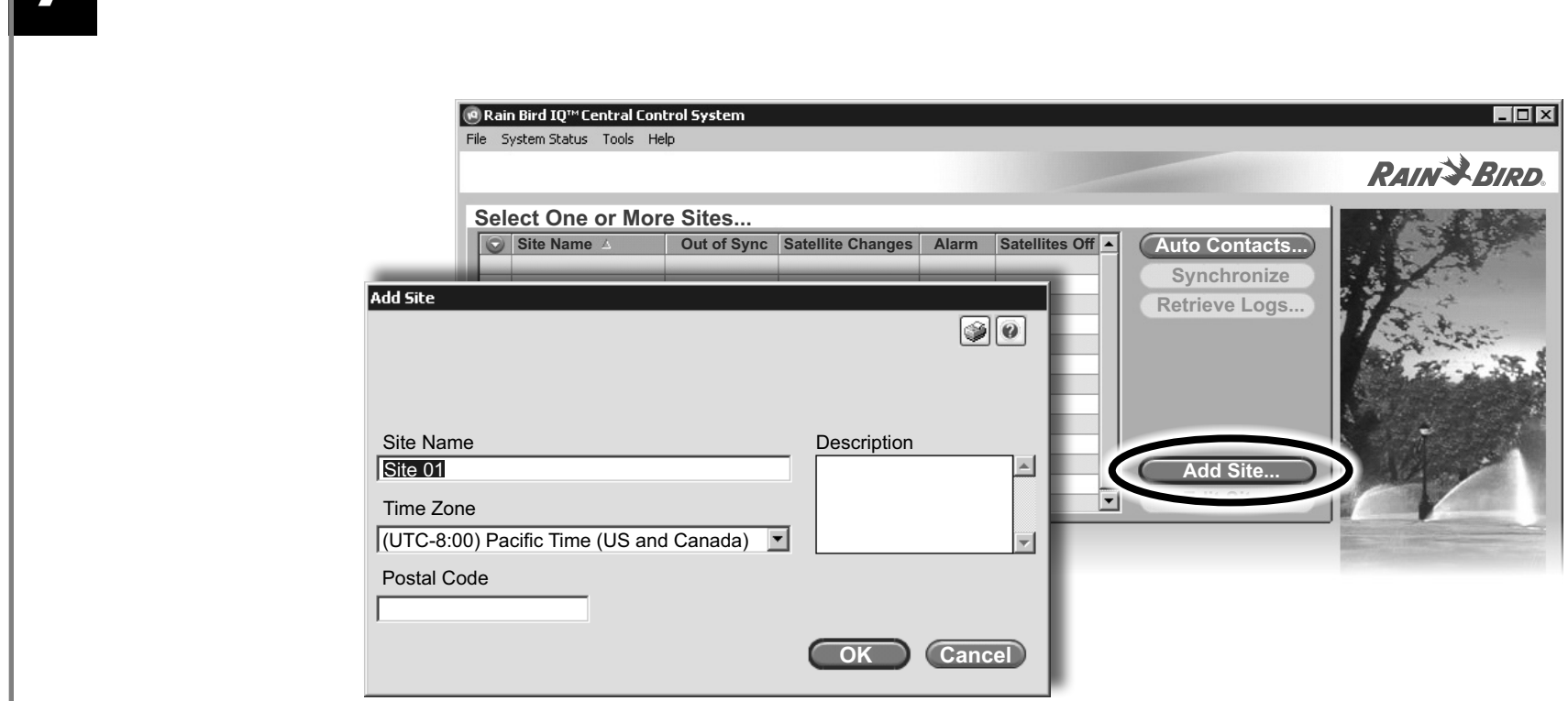


6 Go to www.rainbird.com/iq

- 1 New users: Select IQ-Cloud Sign-up.
- 2 Existing users: Select IQ-Cloud Login.

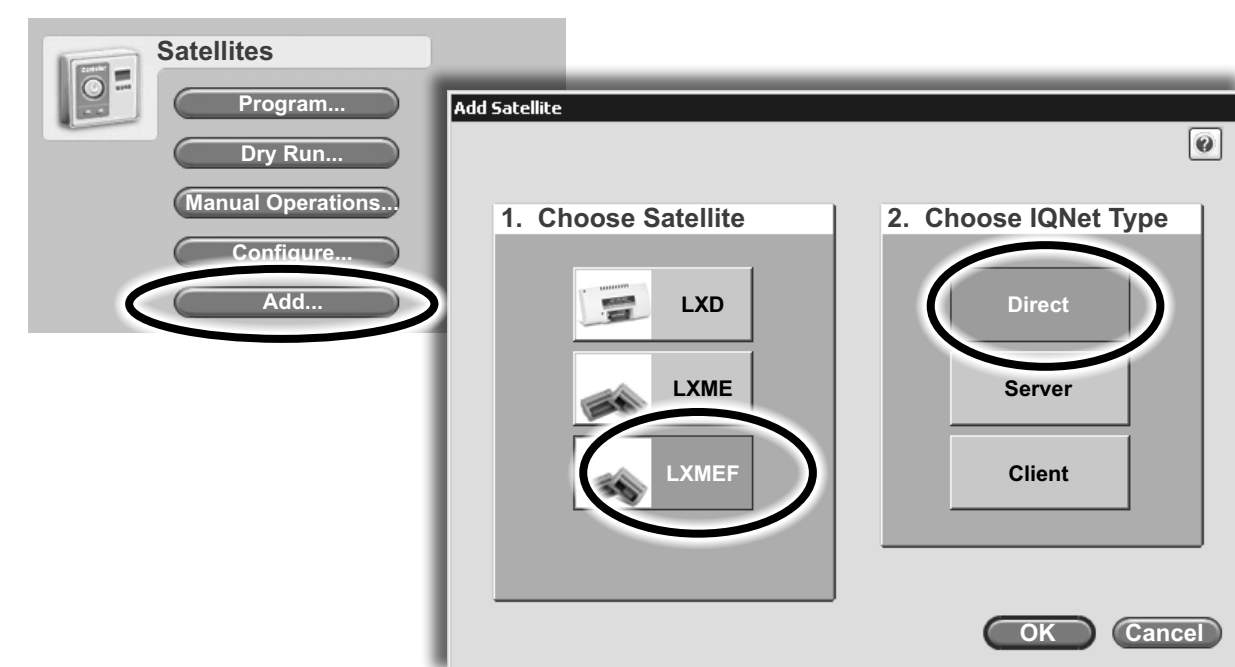


7 Select Add Site



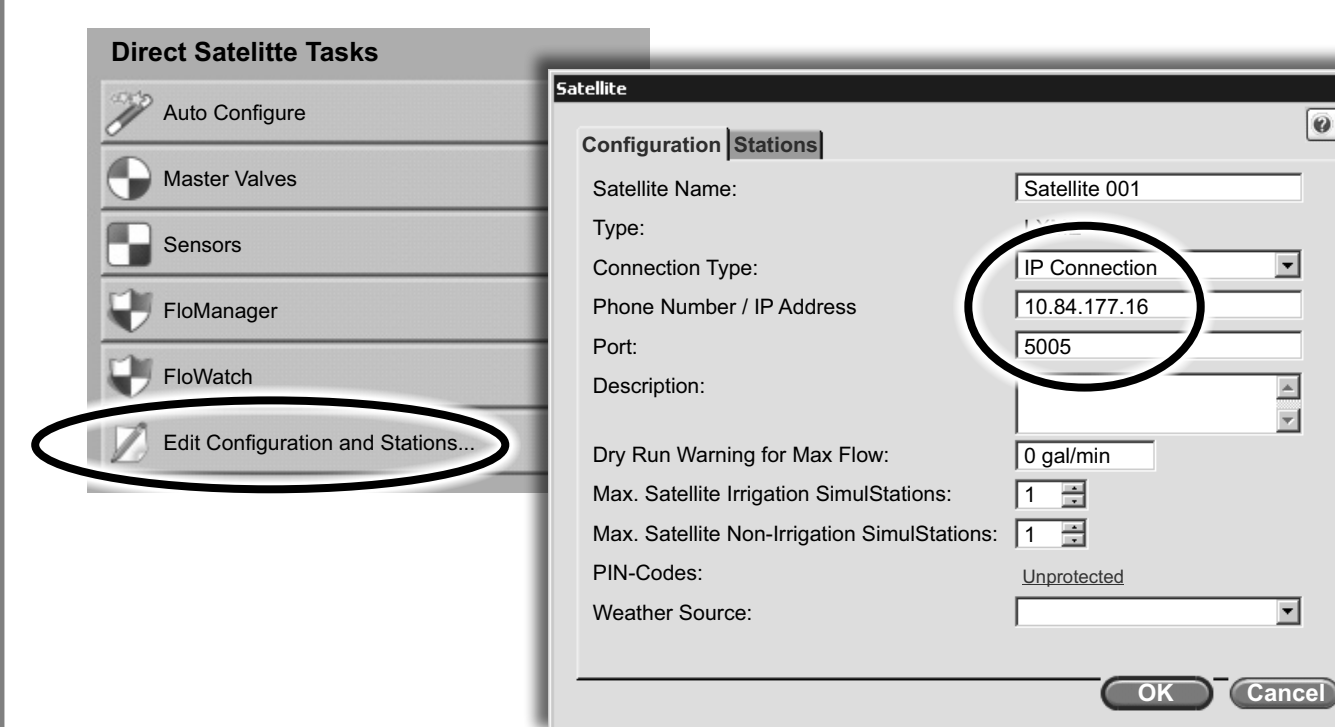
8 Select Add Satellite

- 1 Choose ESP-LX Controller Type.
- 2 Select Direct IQNet Type.



9 Select Configuration and Stations

- 1 Select IP Connection type.
- 2 Enter IP Address and Port Number provided by Site IT Network personnel.



10 Reverse Sync Data from Controller

- 1 Select Auto Configure.
- 2 Check All Options.

