

Rain Bird® 1800® Series Sprays

Non-Potable Field Test

1800® SERIES

SPRAY ANALYSIS

NON-POTABLE



FIELD TEST

ANYONE CAN SAY THEIR PRODUCT PERFORMS. WE WANTED PROOF.

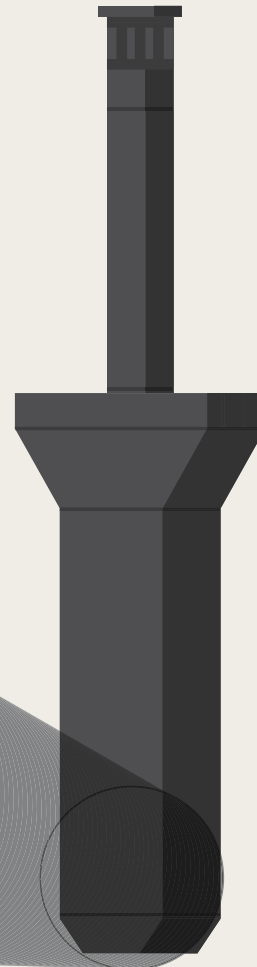
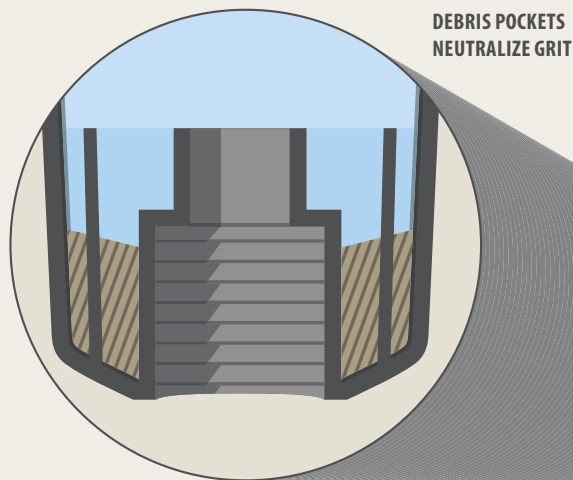
To show you how Rain Bird® 1800® series sprays stack up against the competition, we put them through a set of comparison tests. We call it "Sprayanalysis." It's your assurance that when you install Rain Bird sprays, you can count on them to deliver as promised, day in and day out.

GOING GREEN MEANS CUTTING THROUGH A LOT OF RED TAPE

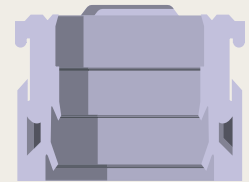
Hope you like paperwork. Because if you want to go green, you'll need to study up on LEED, IgCC, AB 1881 and ASHRAE 189.1. Whew. The acronyms are complicated. The solution is not. Rain Bird's RD1800™ spray makes it easy to promote sustainability and comply with new green codes that require use of non-potable water.

BUILT TO MAKE NON-POTABLE WATER A NON-FACTOR

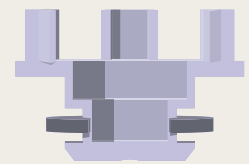
Made from the plastics used in products like swimming pools and non-potable, water-resistant valves, the RD1800's Triple-Blade Wiper Seal, SAM Check Valve and ratchet ring protect against the chlorine and debris commonly found in reclaimed water. With each irrigation cycle, the RD1800's unique debris pockets hold grit in place, so it can't break down spray components and damage the wiper seal. All of this technology makes the RD1800 the perfect candidate for your next project, whether you're dealing with reclaimed water, or just want a spray tough enough to handle anything.



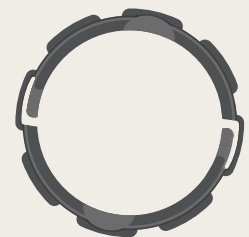
WITH THE RD1800, IT'S WHAT'S INSIDE THAT COUNTS



TRIPLE-BLADE WIPER SEAL



SAM CHECK VALVE



RACHET RING

RAIN BIRD®



WE DECIDED TO TAKE A FIELD TRIP

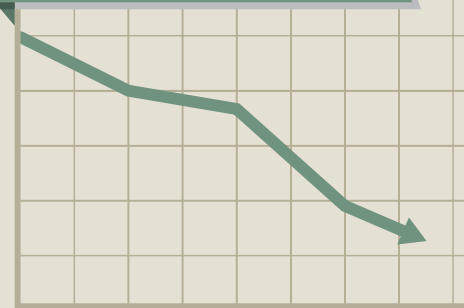
Need a little more convincing of the RD1800's fitness for non-potable water? We thought you might, so we turned this bad boy over to LEGOLAND®, a family theme park in California, for field testing. Ninety percent of the landscaping at LEGOLAND® is irrigated with non-potable water. The LEGOLAND® team routinely changes out several spray heads a day because they are destroyed by high levels of chlorine. They wanted to see if the RD1800 would fair any better, so they installed more than 200 of the sprays in early 2011.



THE RESULTS

Spray maintenance for the zones where the RD1800 was installed fell to zero, freeing up LEGOLAND's maintenance staff for other projects. The site now plans to replace 10,000 more sprays with the RD1800. That's right, 10,000. Don't forget to stretch beforehand, you guys.

SPRAY MAINTENANCE FELL TO ZERO



A CLEAN SOLUTION FOR DIRTY WATER

There's something to be said for the resiliency of the RD1800. Rugged, reliable and innovative, this one-of-a-kind spray head can stand up to the grit and chemicals of any water environment—non-potable or otherwise. That keeps your site in compliance with new green codes and keeps you out of the mud dealing with broken heads. So even though the water might be dirty, your hands—and desk—stay nice and clean.



These aren't the only tests where Rain Bird triumphs. See more tests at www.rainbird.com/Sprayanalysis.

