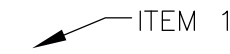


CHOOSING EQUIPMENT CALLOUT METHOD

CHOOSE EITHER LEADERS OR BUBBLE CALLOUTS BY TURNING ON THE APPROPRIATE LAYER:

TEXT\_LEADERS

TEXT\_BUBBLES



TO TURN OFF THIS INSTRUCTION BOX, TURN OFF LAYER "INSTRUCT-CALLOUT".

CHOOSING NOZZLES AND OPTIONAL FEATURES

NOZZLES

HE-VAN NOZZLE  
MPR NOZZLE  
ROTARY NOZZLE  
SQ NOZZLE  
U-SERIES NOZZLE  
VAN NOZZLE

LAYER\_NAME

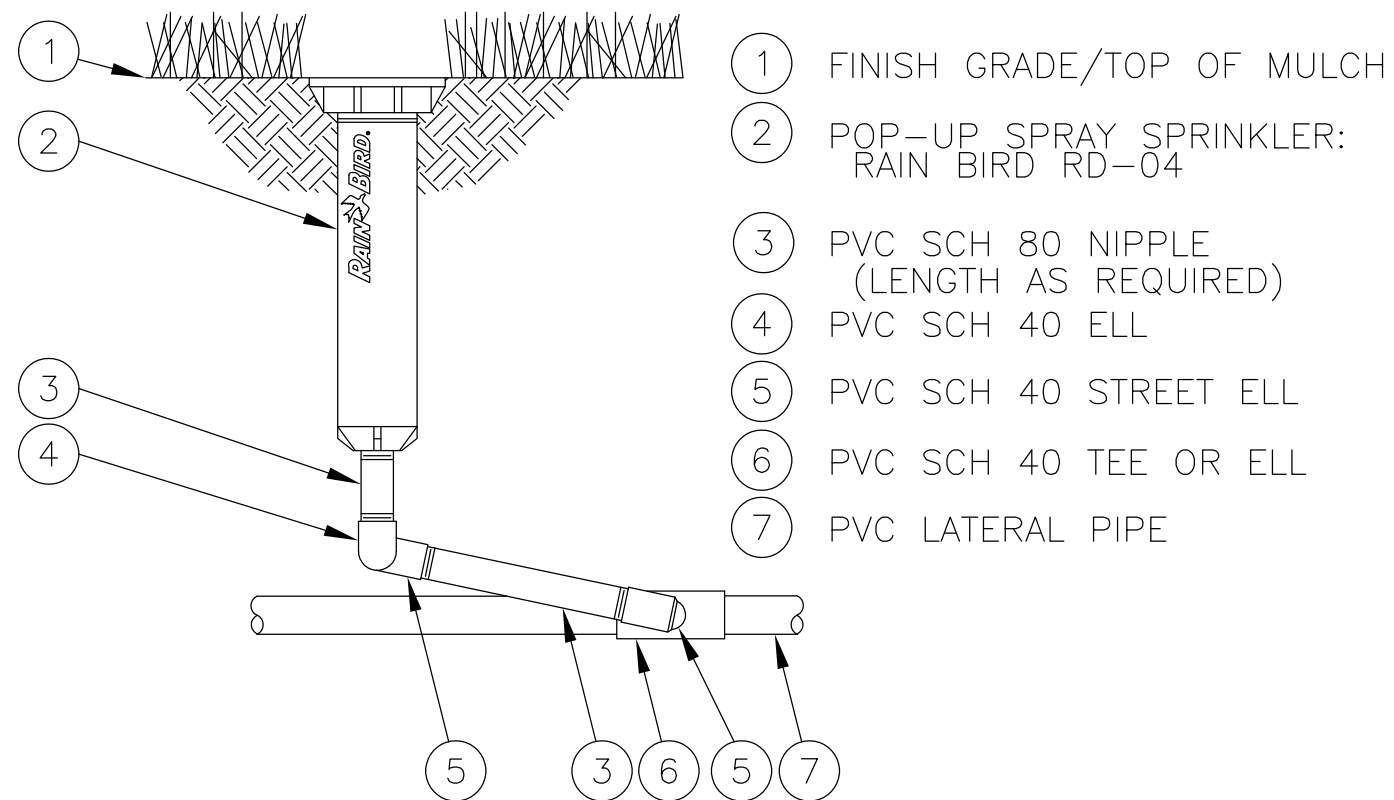
OPTION-NOZ-HEVAN  
OPTION-NOZ-MPR  
OPTION-NOZ-ROTARY  
OPTION-NOZ-SQ  
OPTION-NOZ-U-SERIES  
OPTION-NOZ-VAN

OPTION

NON-POTABLE CAP  
PRS 30PSI WITH FLOW SHIELD  
PRS 30PSI WITH FLOW SHIELD NON-POTABLE CAP  
SAM  
SAM WITH NON-POTABLE CAP  
SAM-PRS 45PSI WITH FLOW SHIELD  
SAM-PRS 45PSI WITH FLOW SHIELD NON-POTABLE CAP  
SAM-PRS 30PSI  
SAM-PRS 30PSI WITH FLOW SHIELD  
SAM-PRS 30PSI WITH FLOW SHIELD NON-POTABLE CAP

LAYER\_NAME

OPTION-NP  
OPTION-PRS-F  
OPTION-PRS-F-NP  
OPTION-SAM  
OPTION-SAM-NP  
OPTION-SAM-P45-F  
OPTION-SAM-P45-F-NP  
OPTION-SAM-PRS  
OPTION-SAM-PRS-F  
OPTION-SAM-PRS-F-NP



D

POP-UP SPRAY SPRINKLER

N.T.S.

RD-04 WITH SWING JOINT

10-17-2011