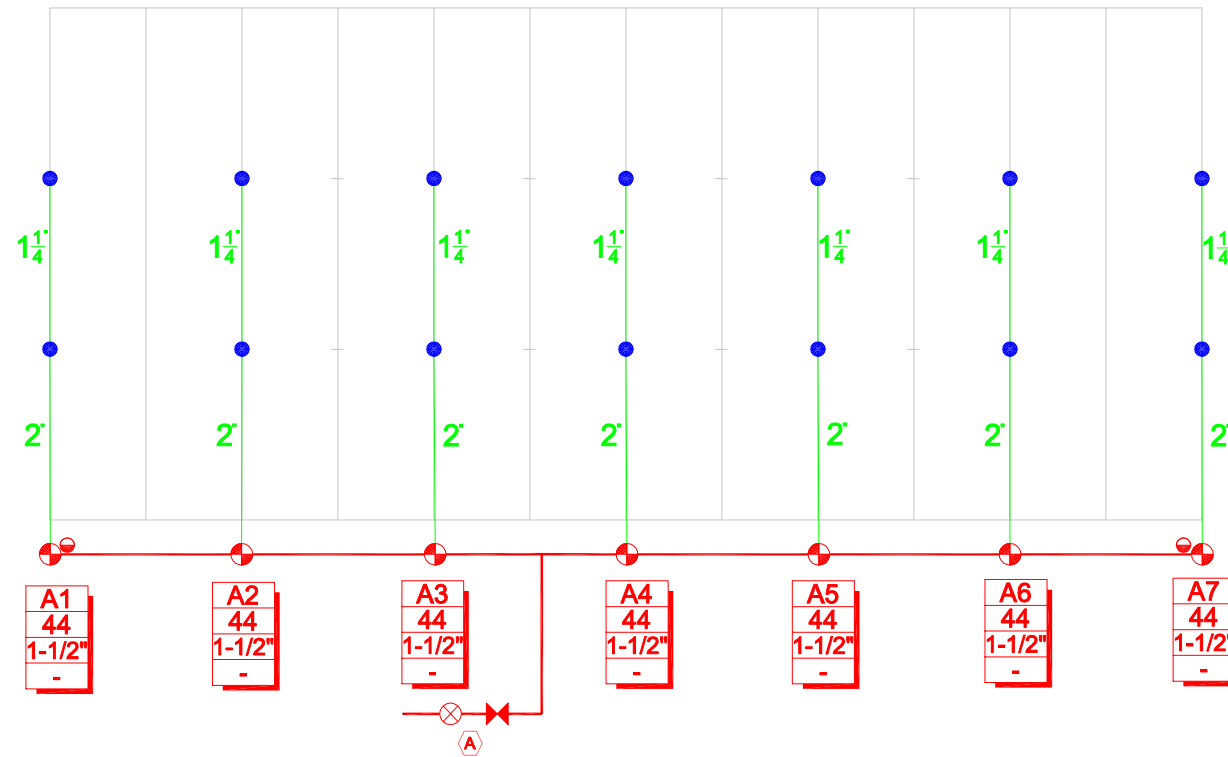


**FOOTBALL  
FIELD**

**8005  
SPRINKLER**



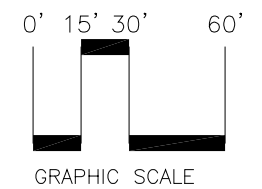
**GENERAL NOTES**

- DESIGN IS BASED UPON A MINIMUM FLOW OF 44 GPM AND A MINIMUM PRESSURE OF 105 PSI DOWNSTREAM OF BACKFLOW PREVENTION DEVICE. IF SUFFICIENT PRESSURE IS NOT AVAILABLE AT POINT-OF-CONNECTION INSTALL A BOOSTER PUMP. CONTACT A RAIN BIRD REPRESENTATIVE FOR THE APPROPRIATE PUMP FOR THE SITE.
- ADDITIONAL LATERALS OUTSIDE PLAY FIELD AREA MAY BE INSTALLED PROVIDED HYDRAULIC CAPABILITY OF SUPPLY IS NOT EXCEEDED.
- SPRINKLER LOCATIONS ARE TO SCALE. PIPE LOCATIONS ARE DIAGRAMMATIC.
- PROVIDE #55K-1 KEY (1" MALE OUTLET) AND SH-2 SWIVEL HOSE ELL FOR EACH QUICK COUPLING VALVE.

**LEGEND**

	QUANTITY	
BACKFLOW PREVENTION DEVICE	1	MAINLINE PIPE: CLASS 200 PVC (2-INCH SIZE)
MAIN SHUT-OFF VALVE	1	LATERAL PIPE: CLASS 200 PVC (SIZED AS SHOWN)
RAIN BIRD PGA OR PEB REMOTE CONTROL VALVE (SIZED AS SHOWN)	7	
RAIN BIRD 5LRC QUICK COUPLING VALVE	2	INDICATES CONTROLLER AND CONTROLLER STATION NUMBER
RAIN BIRD 8005 w/ 18 NOZZLE PRESSURE = 90 PSI RADIUS = 71 FEET FLOW = 22.2 GPM	14	INDICATES LATERAL DISCHARGE IN GPM
	1	INDICATES REMOTE CONTROL VALVE SIZE
RAIN BIRD ESP-LX MODULAR OR ESP-MC IRRIGATION CONTROLLER W/8 STATIONS	1	

Project: \_\_\_\_\_



Date: \_\_\_\_\_

Drawing Number: \_\_\_\_\_

**FF-10**



Rain Bird presents this plan as a typical sports field layout. Rain Bird offers no indemnity, expressed or implied, for projects installed from this plan. Since each site and system contains many variables, Rain Bird expressly recommends the use of a qualified irrigation designer.