

## Vertical Multi-Stage – 1 Pump Enhanced – Aluminum Enclosure

### Medium Flow Pump Station

5 to 50 HP; Up to 150 psi (10.3 bar); Up to 500 gpm (31.5 lps, 114 m<sup>3</sup>/h)

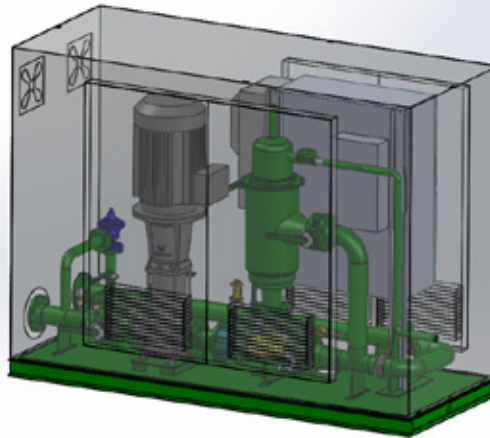
Rain Bird's single pump, Vertical Multi-Stage Enhanced station in a compact enclosure is designed for medium-flow boost, flooded suction and suction lift applications, such as; parks, sports complexes, golf courses, turf farms and other agricultural projects. Its compact design, durable centrifugal pump configuration, choice of options and enclosures make it an ideal choice for Turf irrigation applications with flows up to 500 gpm (31.5 lps, 114 m<sup>3</sup>/h).

#### At-A-Glance Description

- **Entry Level through High Performance Control Package** – With either a cost-effective monochrome touch-panel display or high resolution color touch-panel display for improved user interfaced and remote monitoring via VNC (Virtual Network Computing)
- **Energy efficient** – Variable Frequency Drive (VFD) maintains constant pressure at varying flow demand.
- **Enhanced Serviceability** – Modern electrical design utilizing industrial breaker motor protection instead of fuses. Industrial circuit breakers are quickly reset and designed for an extended service life.
- **Inlet and discharge isolation valves** for easier mechanical serviceability.

#### Standard Features

- **Plumbing Configurations**
  - Inlet and Discharge Piping on same side of the enclosure (as shown)
- **Mechanical Features**
  - Inlet Butterfly Isolation Valve
  - Discharge Butterfly Isolation Valve
  - Pump Isolation Valve
  - Silent Check Valve
- **Pressure / Flow**
  - Stainless Steel Pressure Transducer
  - Flow Switch
- **Enclosures / External Connections**
  - Marine Grade Aluminum Enclosure
  - Polyester Powder-Coated Steel Deck and Piping
  - Thermostat and Fan on Mechanical Enclosure



#### Pump Control

- Pump Start Relay
- VFD - Variable Frequency Drive for Control of Pressure

#### Display

- 4 Line Monochrome Touch Screen Display

#### Accessories

- Intake Filters
  - HDPE Suction Intake Piping
  - Foot Valve
  - Intake Screen
  - Self-Cleaning Intake Screen

#### External Connections

- Zee Pipes
- **Lake Level Control**
  - Lake Level Controls (Floats)
  - Lake Level Shut Off (Float)

#### Optional Features

- **Plumbing Configurations**
  - Pump Bypass
  - Inlet and Discharge Piping through the enclosure (side)

### Vertical Multi-Stage – 1 Pump Enhanced – Aluminum Enclosure

Motor Size	5 HP	7.5 HP	10 HP	15 HP	20 HP	25 HP	30 HP	40 HP	50 HP
Pump Type	Vertical Multi-Stage								
Power Requirement (Other Power Configurations Available Upon Request)	208-230/1/60 V/PH/HZ								
	208-230/3/60 V/PH/HZ								
	480/3/60 V/PH/HZ								
	575/3/60 V/PH/HZ								
Inlet Pressure Requirement	Suction Lift or Boost Applications								
Outlet Pressure	Up to 150 psi (10.3 bar) <sup>(1)</sup>								
Outlet Flow	Up to 500 gpm (31.5 lps, 114 m <sup>3</sup> /h) <sup>(1)</sup>								
Concrete Slab Dimensions (min)	10' 3" x 4' 9" (312.4 cm x 145 cm)								
Platform Skid Dimensions (min)	9' 3" x 3' 9" (281 cm x 114.3 cm)								
Inlet / Discharge Size	4" Flanges Standard, 6" Inlet Flange (Suction Lift), 3", 4", 6", 8" Adapters Available								

(1) Refer to pump performance curves, provided upon request from pumps@rainbird.com

- **Filters**

- Wye Strainer
- G-Series Filter (<400 GPM)

- **Mechanical Feature**

- Pressure Relief Valve
- Flooded Suction Flood Prevention Valve
- Re-Prime Piping (Suction Lift Only)

- **Pressure / Flow**

- Paddle Wheel Flow Meter
- Magnetic Flow Meter

- **Enclosures**

- Polyester Powder Coated Steel Enclosure
- Marine Grade Aluminum Enclosure with Environmental Package for sound dampening
- Heat Exchanger for Electrical Cabinet
- Less Enclosure (pump and deck only)

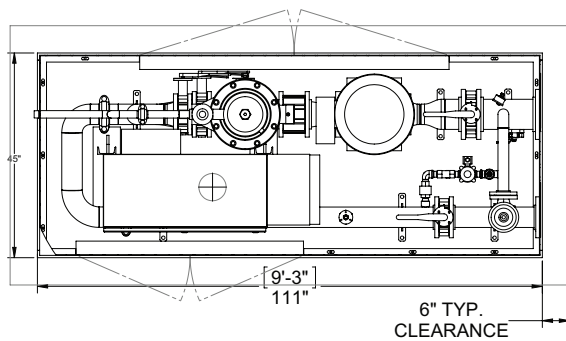
- **Display**

- Enhanced PLC controls package with 8.4" High Resolution, Color Touch Panel display with VNC communication ability and Multi Language Capability

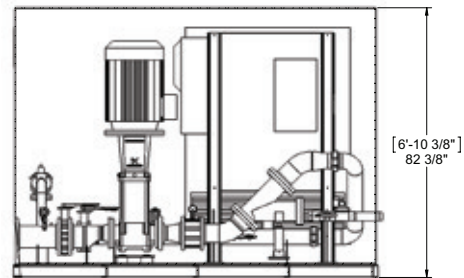
- **Pump Control**

- Constant Speed Motor

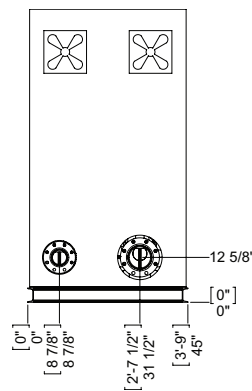
## Details



**Plan View**



**Profile View**



**Side View**

### Rain Bird Corporation - Pumps Division

6991 E. Southpoint Road  
 Tucson, AZ 85756  
 Applications Group: (520) 806-5620  
 Fax: (520) 741-6191  
 E-mail: pumps@rainbird.com

The Intelligent Use of Water™  
[www.rainbird.com](http://www.rainbird.com)