

## Vertical Multistage - 1 Pump - LP Series

### Low Profile Pump Station

1 to 2 HP; Up to 50 psi (3.5 bar); Up to 60 gpm (3.8 lps, 13.6 m<sup>3</sup>/h)

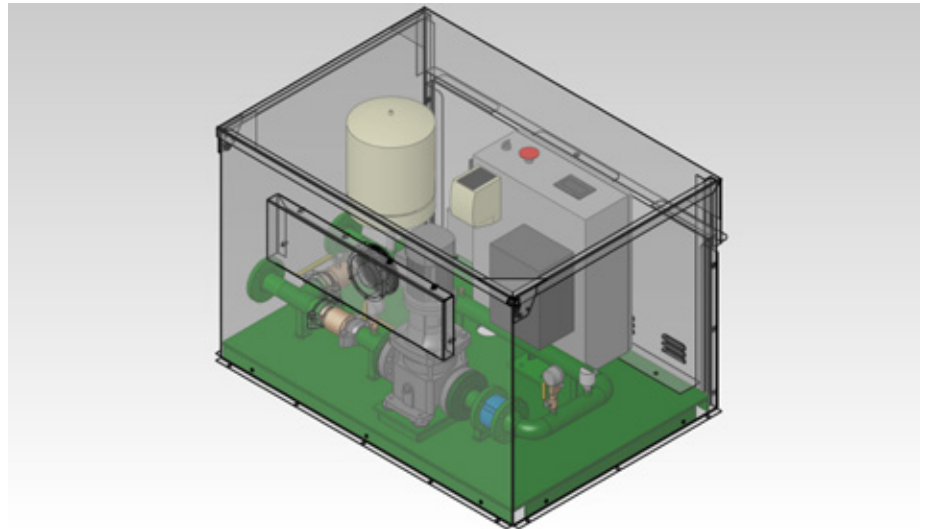
Rain Bird's LP Series Vertical Multistage pump stations are designed for small to midsize boost, flooded suction and suction lift applications such as city parks and buildings, sports fields, commercial buildings, small home owner's associations and large residential sites. Its low profile design, durable vertical multistage pump configuration, choice of options and weather-resistant aluminum enclosure make it an ideal choice for Turf irrigation applications with flows up to 60 gpm (3.8 lps, 13.6 m<sup>3</sup>/h).

#### At-A-Glance Description

- **Cost effective** – Standardized VFD driven pump system in enclosure delivers high performance with minimum investment.
- **Low Profile** – Compact aluminum enclosure with powder coated skid and piping.
- **Energy efficient** – Variable Frequency Drive (VFD) maintains constant pressure at varying flow demand.
- **Reliability** – Simple, standard design, easy installation and maintenance.

#### Standard Features

- **Plumbing Configurations**
  - Integrated pump bypass
  - Inlet and Discharge Piping on the opposite sides of the enclosure (as shown)
- **Mechanical Features**
  - Inlet Butterfly Isolation Valve
  - Discharge Butterfly Isolation Valve
  - Silent Check Valve
- **Enclosures / External Connections**
  - Marine Grade Aluminum Enclosure
  - Polyester Powder-Coated Steel Deck and Piping
  - Thermostat and Fan on Mechanical Enclosure
- **Pump Control**
  - Pump Start Relay
  - VFD - Variable Frequency Drive for Control of Pressure
- **Display**
  - Monochrome Touch Screen Display



#### Optional Features

- **Plumbing Configurations**
  - Inlet and Discharge Piping through the deck (bottom)
- **Enclosures**
  - Marine Grade Aluminum Enclosure with Environmental Package for sound dampening
  - Less Enclosure (pump and deck only)
- **Pump Control**
  - Constant Speed Motor

#### Accessories

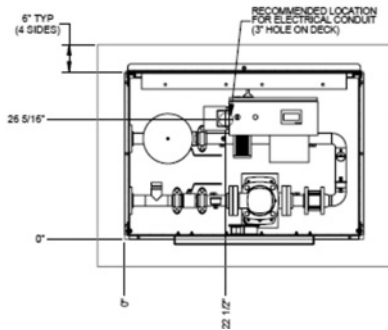
- **Intake Filters**
  - HDPE Suction Intake Piping
  - Foot Valve
  - Intake Screen
- **External Connections**
  - Zee Pipes
- **Low Flow**
  - Bladder Tank

#### Vertical Multistage – 1 Pump – Aluminum Enclosure

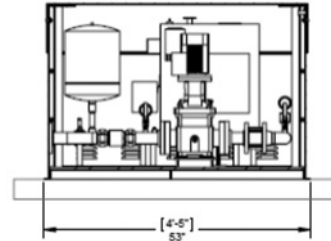
Motor Size	1 HP	1.5 HP	2 HP
Pump Type	Vertical Multistage		
Power Requirement	480/60/3 V/HZ/PH		
	208-230/60/3 V/HZ/PH		
	208-230/60/1 V/HZ/PH		
Inlet Pressure Requirement	Suction Lift or Boost Applications		
Outlet Pressure	Up to 50 psi (3.5 bar) <sup>(1)</sup>		
Outlet Flow	Up to 60 gpm (3.8 lps, 13.6 m <sup>3</sup> /h) <sup>(1)</sup>		
Concrete Slab Dimensions (min)	65" x 49" (165 cm x 125 cm)		
Platform Skid Dimensions (min)	53" x 39 3/4" (135 cm x 101 cm)		
Inlet / Discharge Size	2" flange fitting standard - 3" and 4" adapters available		
Cabinet Height (from slab)	35" (89 cm)		

(1) Refer to pump performance curves, provided upon request from pumps@rainbird.com

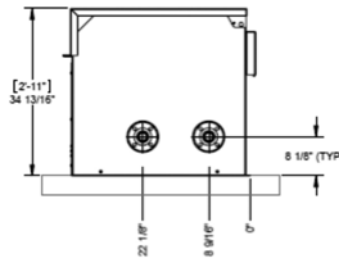
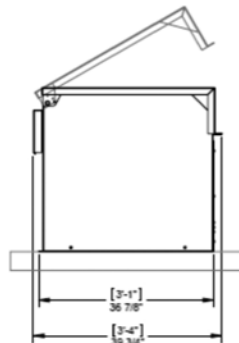
## Details



Plan View



Profile View



Side Views