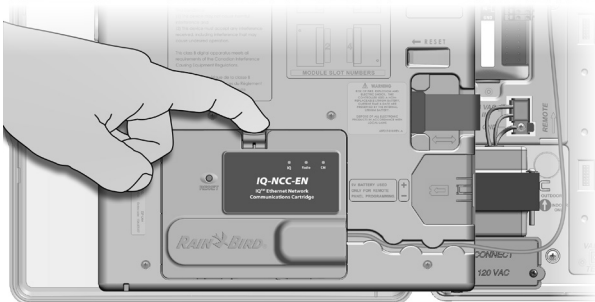


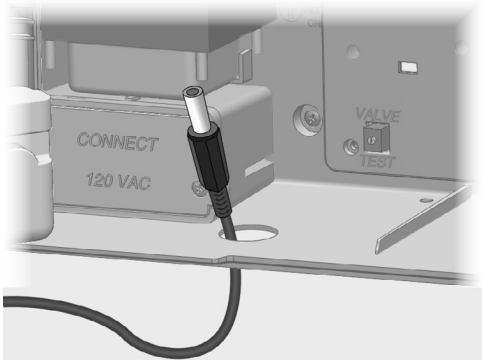
# WiFi Adapter Mounting Instructions

## Inside Cabinet

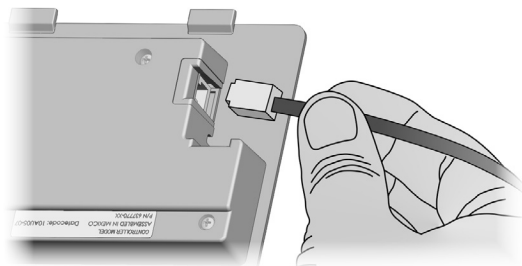
- 1 Open the controller outer cabinet door and controller front panel.
- 2 Press down on the top-latch of the cartridge bay cover (or NCC cartridge if already connected) and remove it from the back of the controller front panel.



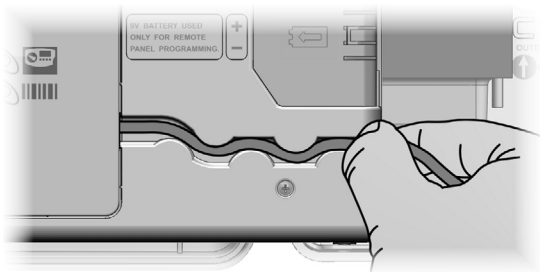
- 3 Locate (or remove) the small knockout on the bottom of the controller cabinet and run the wifi adapter's power connector through the hole and into the cabinet.



- 4 Plug the wifi adapter cable into the connection jack on the back-side of the NCC cartridge.



- 5 Replace the cartridge and route the wifi adapter cable through the cable channel.

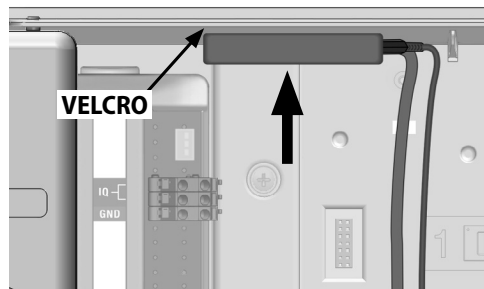


- 6 Plug the wifi adapter cable and power connector into the wifi adapter unit. Then place a piece of velcro tape on the wifi adapter.

**NOTE:** Do not place velcro over ventilation holes or operation LED lights on the wifi adapter.



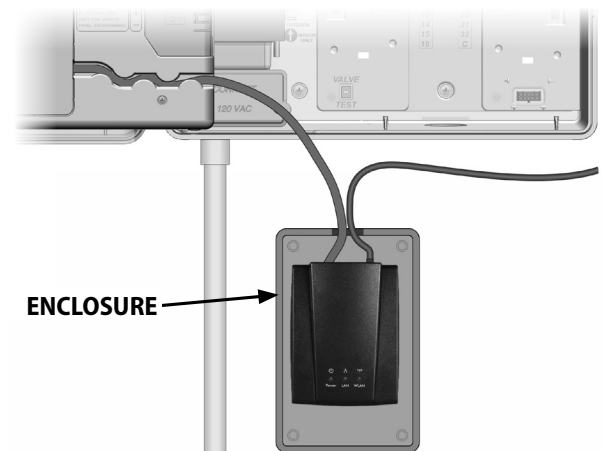
- 7 Choose a spot inside the controller cabinet where the wifi adapter will fit. Place another piece of velcro tape on an adjacent surface and mount the adapter.



**NOTE:** Do not place wifi adapter directly touching the controller connection module or any adjacent field wiring modules.

If the WiFi adapter is too large to fit inside the cabinet, it could be mounted on the outside using an electronic instrument enclosure.

- 8 Mount the enclosure on a wall adjacent to the controller. Run the wifi adapter cable out of the controller and into the enclosure. Then run the adapter's power connector into the enclosure.



- 9 Plug the wifi adapter cable and power connector into the wifi adapter unit and secure the enclosure lid.