

Rain Bird HDF 1X2 Disc Filter

Automatic self-cleaning 2" filter for low flow ranges.

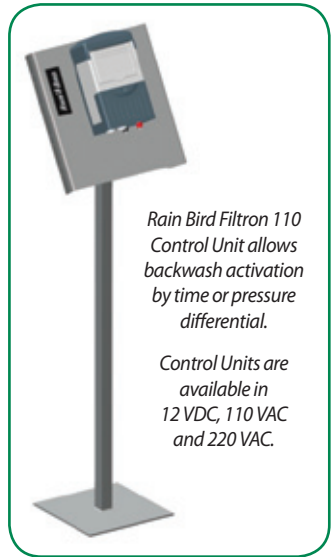
Maximum Flow: 106 gpm (24 m³/h).

Applications

- ❖ Turf irrigation systems with flow rates up to 106 GPM that require clean water.
- ❖ For Industry:
 - Discharge water
 - Recycled water
- ❖ Suited for areas with or without electricity.
- ❖ Ideal where manual cleaning is troublesome.
- ❖ Compact design fits in tight spaces.

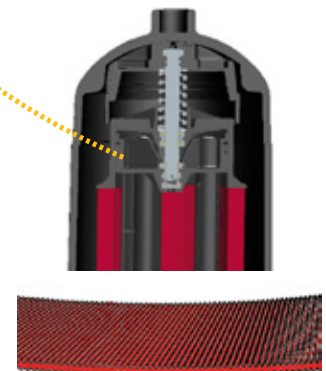
Advantages

- ❖ Rain Bird HDF systems helical action provides efficient cleaning.
- ❖ Maximum filtering surface (231 in²/1492 cm²).
- ❖ Manufactured from engineered plastics to resist rust and corrosion from chemicals and water.
- ❖ Unit is pre-assembled for easy installation.
- ❖ Disc elements provide depth filtration - not just surface filtration.
- ❖ Control Unit functions on pressure differential or time.
- ❖ Manual backflush cycle can be initiated from the controller.
- ❖ Plastic backflush valves are lightweight and corrosion resistant.
- ❖ Low maintenance.
- ❖ Filtration disc versatility (filtration grade can be easily changed).
 - Filtration options:
 - 100 micron (150 mesh)
 - 130 micron (120 mesh)
 - 200 micron (75 mesh)



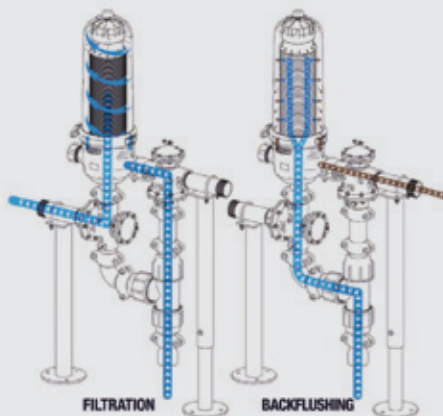
Rain Bird Filtron 110 Control Unit allows backwash activation by time or pressure differential.

Control Units are available in 12 VDC, 110 VAC and 220 VAC.



How It Works

Rain Bird HDF Series 1X2 filters backwash successively.



FILTRATION STAGE: As water goes through the discs, particles are projected away due to the cyclone effect, reducing the backflushing frequency.

BACKFLUSHING STAGE: Water is projected through the discs, expelling the retained particles and evacuating them through the drainage manifold.

FILTRATION Maximum flow per 2" filter

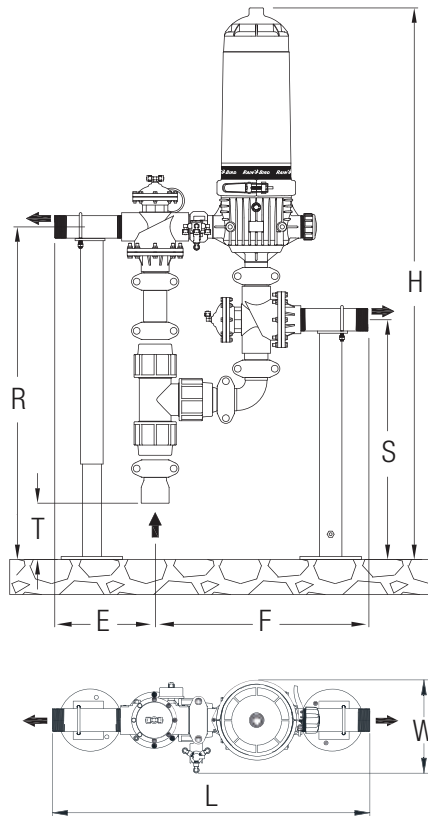
		HDF SERIES 1X2		
QUALITY OF WATER	micron mesh	200	130	100
		75	120	150
GOOD	gpm	106	106	106
	m ³ /h	24	24	24
AVERAGE	gpm	106	88	80
	m ³ /h	24	20	20
POOR	gpm	106	79	79
	m ³ /h	24	18	18
VERY POOR	gpm	79	53	53
	m ³ /h	18	12	12

MATERIAL

Housing	Polyamide reinforced with fiberglass
Filtering element	PP grooved discs
Sealing element	Nitrile rubber (NBR)

pH>4 • Maximum pressure 145 psi / 10 bar • Maximum temperature 140°F/60°C

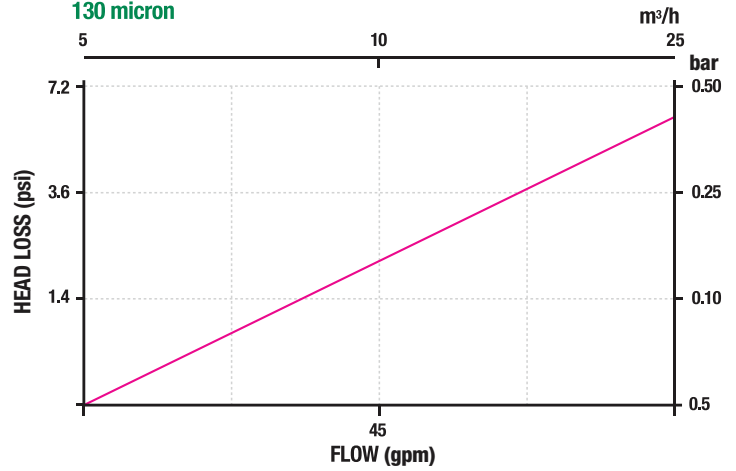
RAIN BIRD HDF 1X2



BACKFLUSHING

	200-130 micron (75-120 mesh)	100 micron (150 mesh)
Minimum backflushing pressure per 2" filter	40 psi	50 psi
	2.8 bar	3.5 bar
Minimum backflushing flow per 2" filter	40 gpm	50 gpm
	2.5 l/s	3.1 l/s

HDF 1X2 HEAD LOSS
130 micron



HDF SERIES 1X2	Specifications				Dimensions							
	Model	N. Filters	Manifold	Filtering surface in ² cm ²	F in mm	E in mm	L in mm	W in mm	R in mm	T in mm	S in mm	H in mm
1X2/2G	1X2"	Inlet 2" PVC Outlet 2" NPT Drainage 2" NPT	231 1492	22 571	11 270	33 842	10 247	35 894	6 151	25 644	58 1482	

Rain Bird Corporation

6991 E. Southpoint Road
Tucson, AZ 85756
Phone: (520) 741-6100
Fax: (520) 741-6522

Rain Bird Technical Services

(800) RAINBIRD (1-800-724-6247)
(U.S. and Canada)

Rain Bird Corporation

970 West Sierra Madre Avenue
Azusa, CA 91702
Phone: (626) 812-3400
Fax: (626) 812-3411

Specification Hotline

800-458-3005 (U.S. and Canada)

Rain Bird International, Inc.

1000 West Sierra Madre Ave.
Azusa, CA 91702
Phone: (626) 963-9311
Fax: (626) 852-7343

The Intelligent Use of Water™
www.rainbird.com