



Rain Bird Golf Controllers Troubleshooting Guide



Install Confidence.® Install Rain Bird®
Golf Irrigation Products.



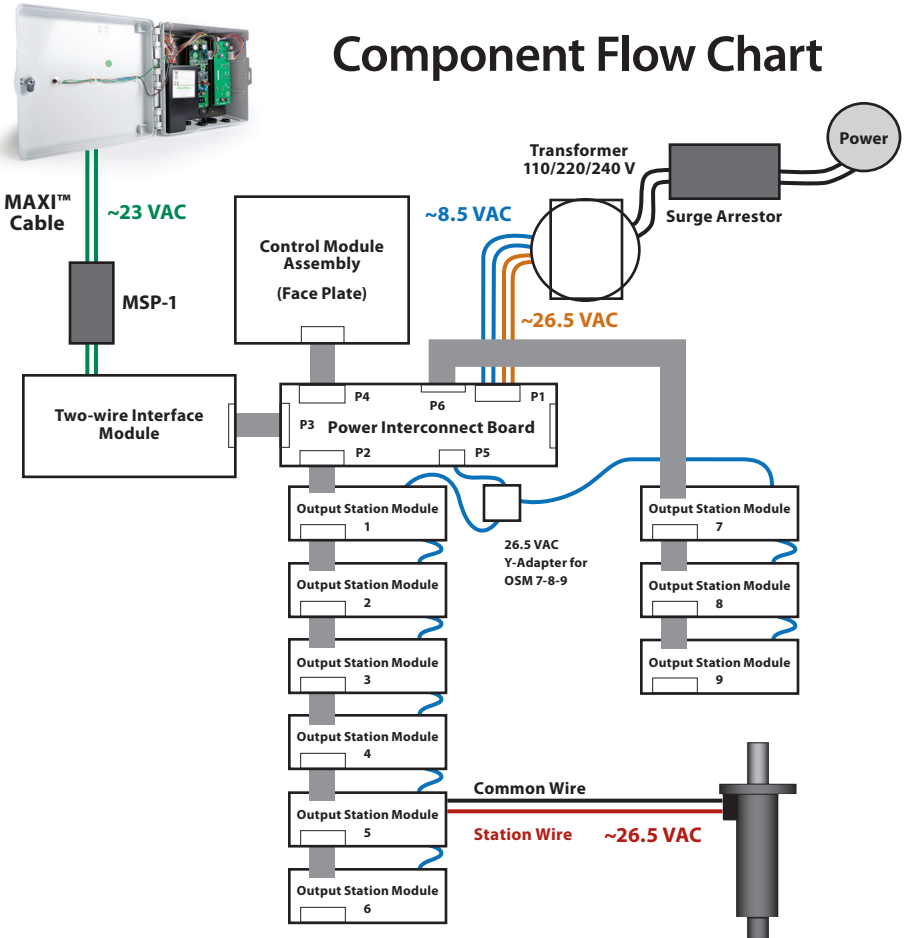
Rain Bird® Two-Wire PAR+ES Controllers

Two-Wire PAR+ES Controllers install quickly, boast the best-in-class user interface, a pedestal enclosure and are durably constructed. The base configuration of 16 stations can be upgraded at any time — in eight-station increments up to 72 stations — to accommodate changing course irrigation requirements. In the central control mode, an unlimited number of irrigation schedules can be programmed to further enhance watering flexibility and precision.





Component Flow Chart



Tools Required

- Flat head screwdriver
- Philips screwdriver
- Digital multi-meter
- Clip-on fuse holder and set of alligator clips

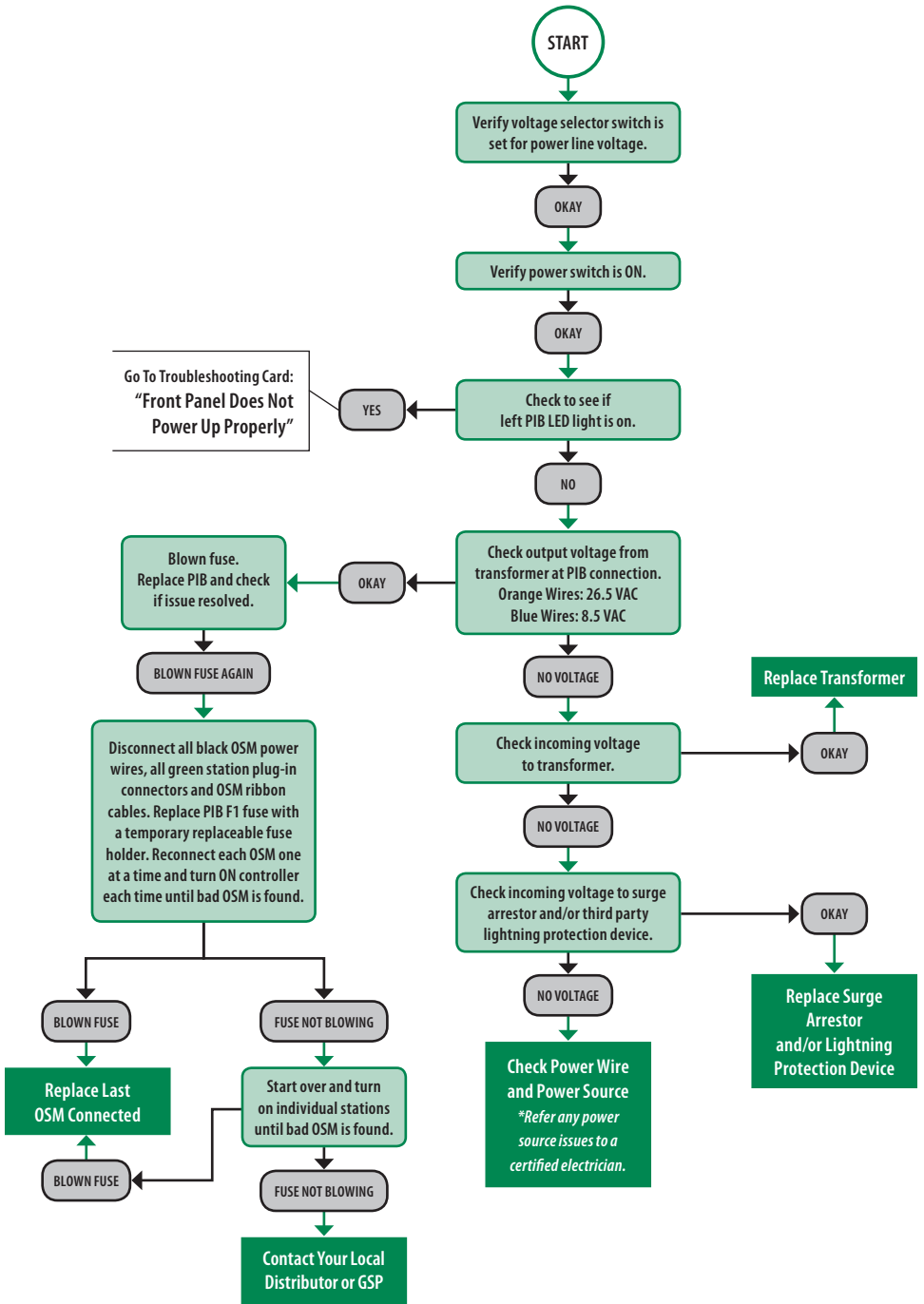
Error Codes

- **Error. Incompatible OSM:** ROM-8 being used or damaged OSM
- **ROM Memory Error:** EPROM is defective
- **RAM Memory Error:** Dallas Chip is defective
- **Breaker Tripped:** Circuit breaker is open
- **RT Clock Error:** Dallas Chip is defective
- **No Boards Found:** No OSM installed or first OSM is damaged
- **Hardware Failure:** PIB is defective or main power not clean

Terminology and Acronyms

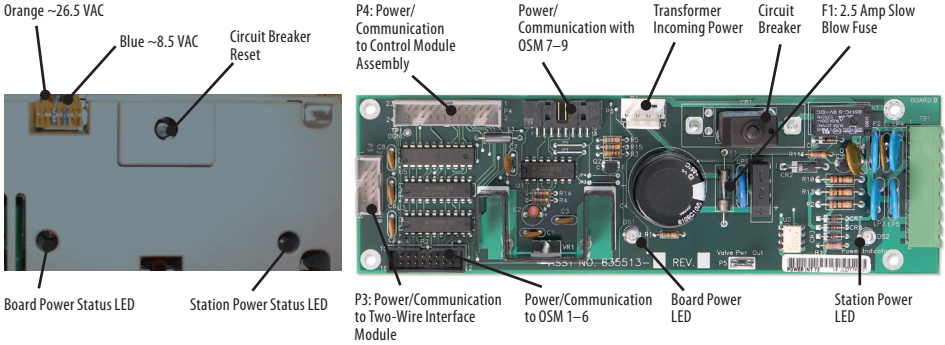
- Control Module Assembly = Front Panel = Faceplate
- Erasable Programmable Read-only Memory: **EPROM**
- Light Emitting Diode: **LED**
- Liquid Crystal Display: **LCD**
- Main Logic Board: **MLB**
- MAXI Interface Module: **MIM**
- Output Station Module: **OSM**
- Power Interconnect Board: **PIB**
- Random Access Memory: **RAM**, e.g. Dallas Chip
- Relay Output Module: **ROM-8**
- Two-wire Interface Module: **IFX**
- Integrated Control Interface Pulse: **ICI+**

“Controller Does Not
Power Up Properly”



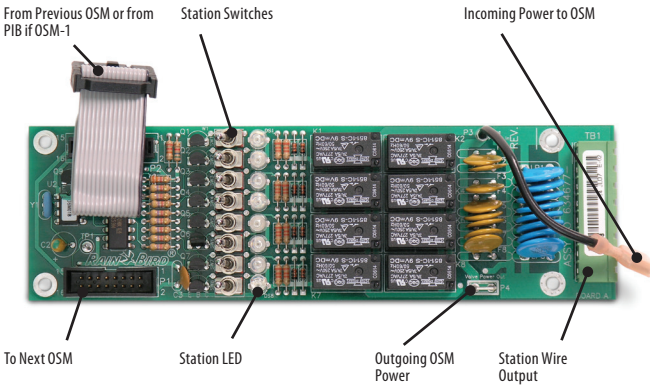


POWER INTERCONNECT BOARD (PIB)



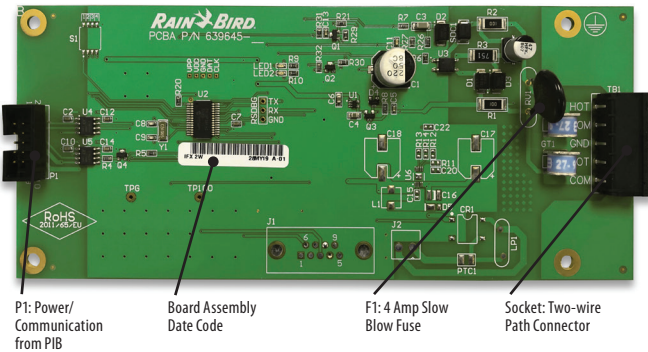
» Note: PAR+/PAR+ES and MSC+ PIB's are not interchangeable. Installing the wrong boards will result in a "Hardware Failure" error code.

OUTPUT STATION MODULE (OSM)

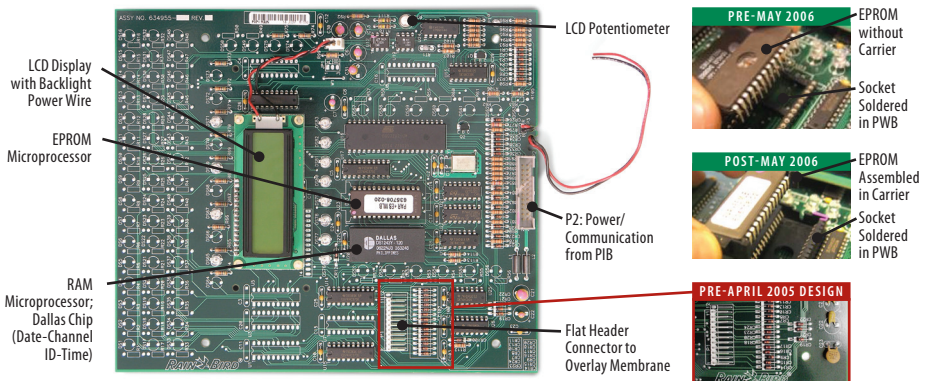


» Note: OSMs replaced Relay Output Modules (ROM-8) in 2002. Installing ROM-8s in a controller manufactured after 2002 will result in an "Incompatible OSM" error code.

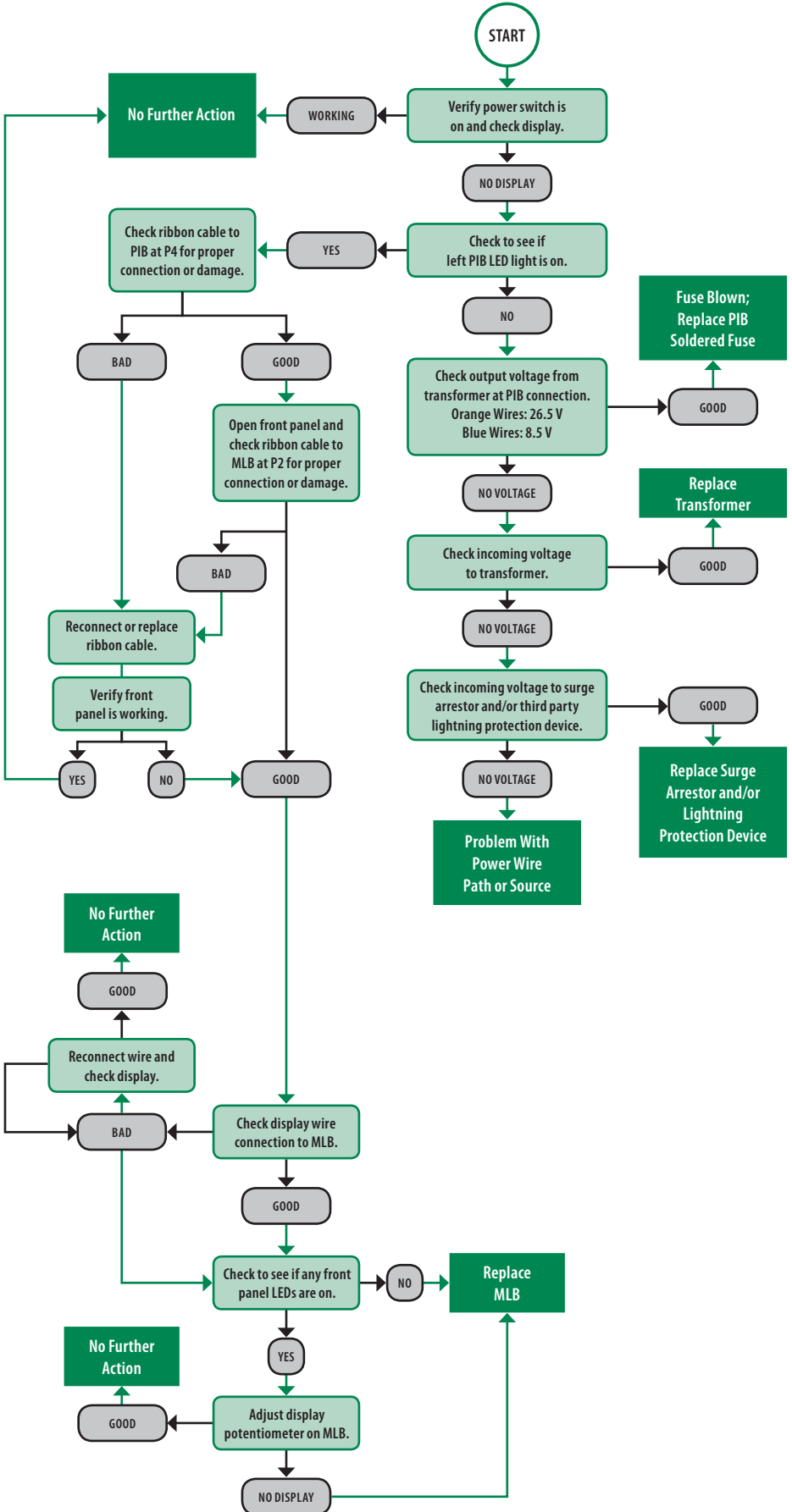
TWO-WIRE INTERFACE MODULE (IFX)



MAIN LOGIC BOARD (MLB)

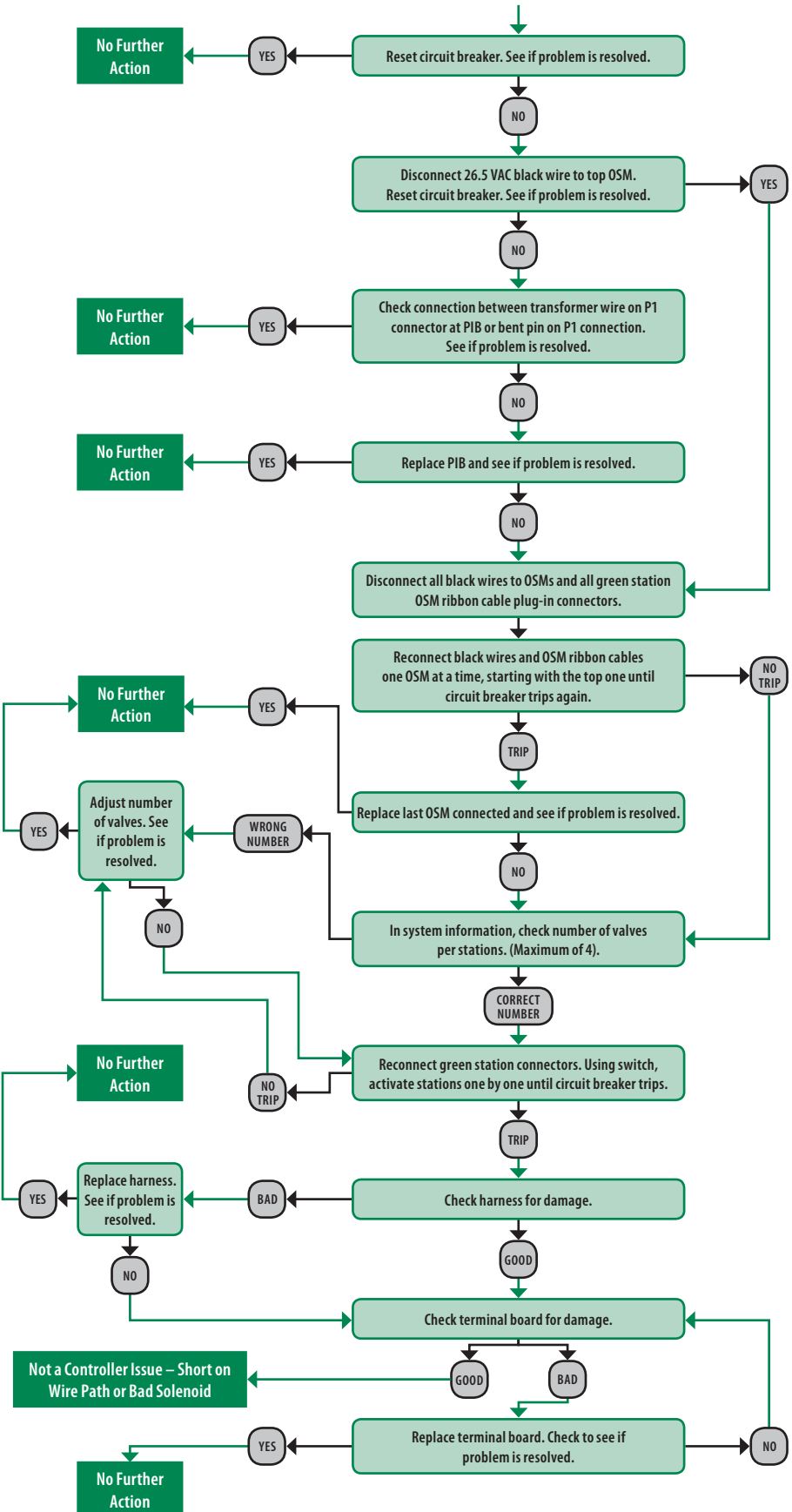


“Front Panel Does Not Power Up Properly”





“Tripping Circuit Breaker”

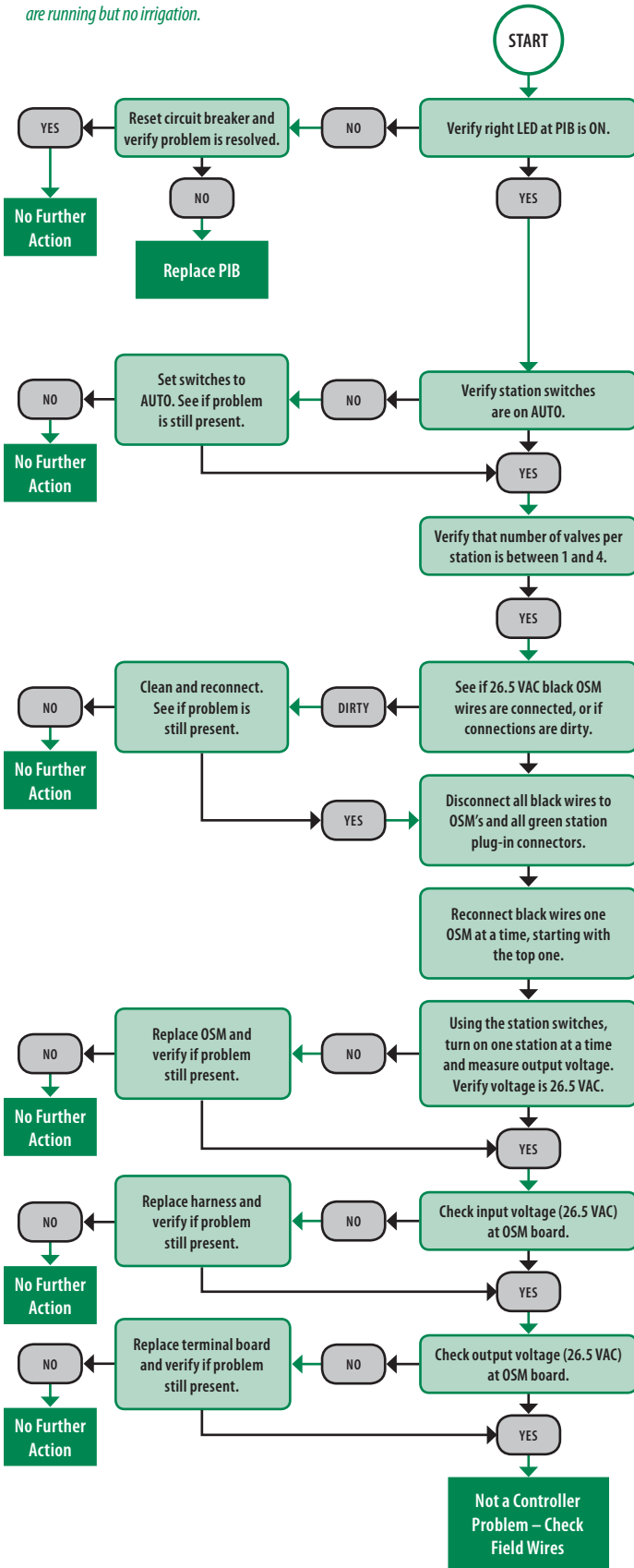


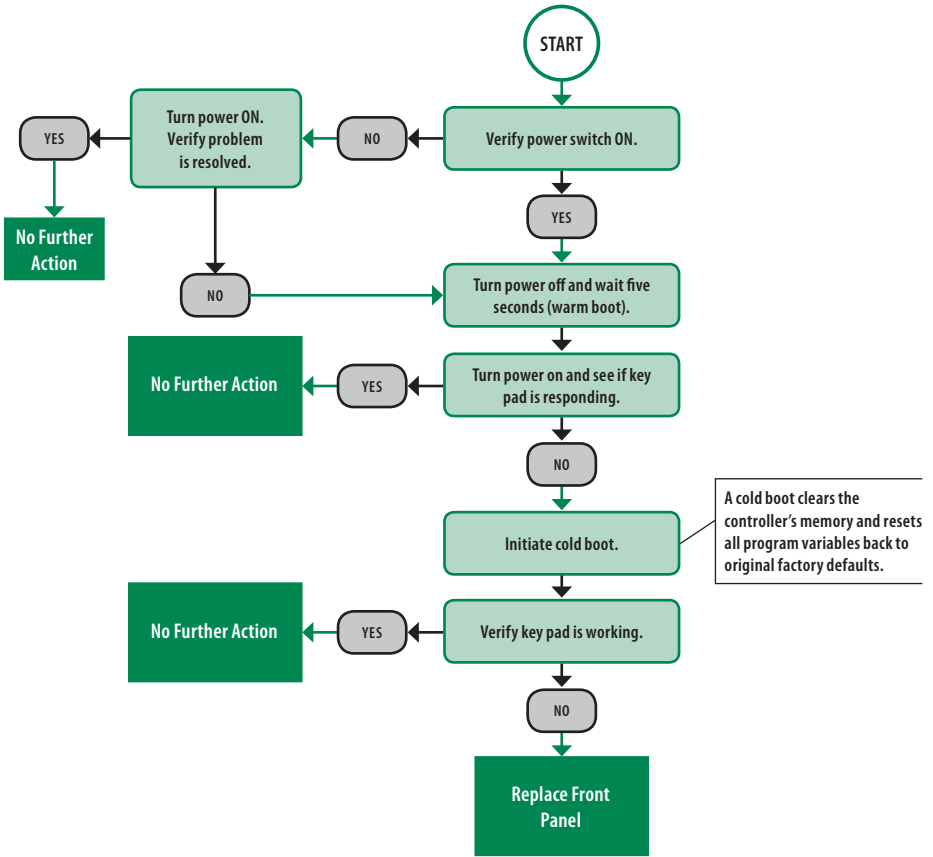
“All/Some Stations Not Working”

Front panel indicates that stations
are running but no irrigation.



» Note: This troubleshooting card assumes that water and pressure are ok.



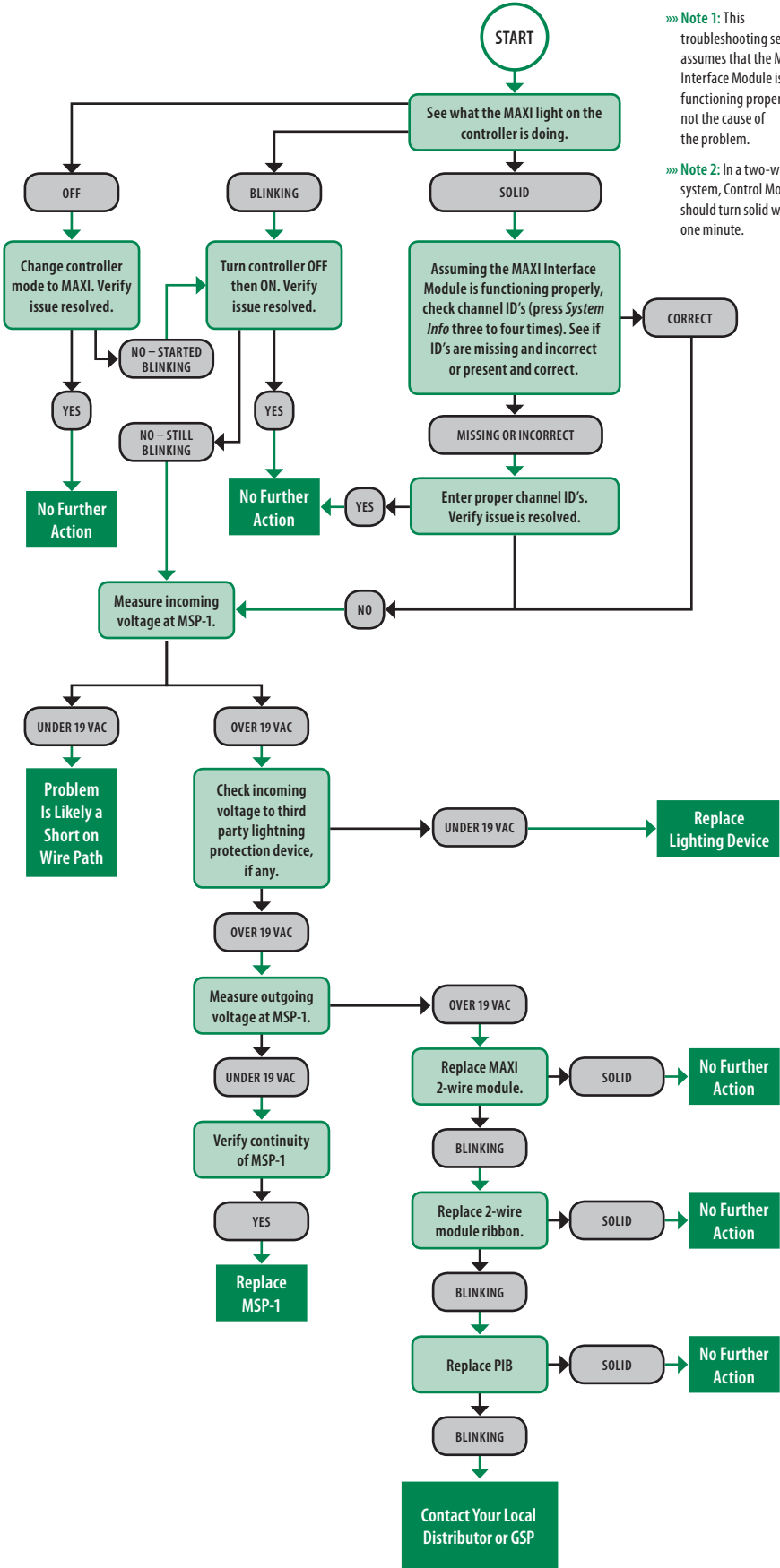


How to perform a Factory Reset/Cold Boot with a non-responding key pad

1. Turn Power **OFF**
2. Hold **COPY PASTE** and **SYSTEM INFORMATION**
3. Turn Power **ON**
4. Hold button down until **NEW SYSTEM SETUP** appears in display



“Controller Not Responding to MAXI™ Signal”



» Note 1: This troubleshooting section assumes that the MAXI Interface Module is functioning properly and not the cause of the problem.

» Note 2: In a two-wire system, Control Mode LED should turn solid within one minute.



Testing of MSP-1 Surge Arrestor

When installed properly:

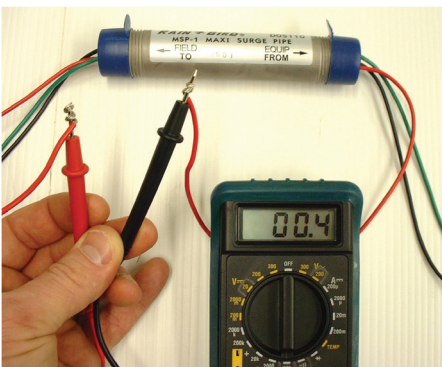
- All three wires are a continuous path through the LINE and EQUIP ends.
- The green wire from both ends must be physically grounded together.
- The MSP-1 surge arrester unit is directional and the end marked LINE must be connected to the two-wire path coming from the field.

Test procedure:

Use digital multi-meter on its Ohm setting

- Check for continuity through red to red, black to black, and green to green. Reading should be $\sim 0\Omega$.
- There should NOT be continuity between any wire of mixed colors. Reading should be $\sim 750\Omega$.

The failure of any of the above tests indicates a malfunctioning surge arrester and will not provide any further protection and necessitates the replacement of the current MSP-1.



Discover the TRUE Benefits™ of a Rain Bird System



Timeless Compatibility

Rain Bird golf irrigation products make it easy and affordable to maintain a state-of-the-art irrigation system that updates as your course does.



Real-Time Response

Get automatic optimization between your Central Control and the field with continuous two-way communication.



Unmatched Quality

In engineering, design and testing, Rain Bird rigorously tests every product to stand up to the world's harshest conditions.



Easy To Use

From software interfaces to rotor designs, Rain Bird products help you and your crew find a quicker, hassle-free path to top playability.



Rain Bird Corporation

970 W. Sierra Madre
Azusa, CA 91702
Phone: (626) 812-3400
Fax: (626) 812-3411

Rain Bird Corporation

6991 E. Southpoint Road
Tucson, AZ 85756
Phone: (520) 741-6100
Fax: (520) 741-6117

Rain Bird International, Inc.

1000 West Sierra Madre
Azusa, CA 91702
Phone: (626) 963-9311
Fax: (626) 852-7343

rainbird.com/golf

Follow us @RainBirdGolf 