

Hose Reels

Durable Construction. Easy to Use. Superior Quality.

Rain Bird® Hose Reels make watering with hoses faster, safer and more efficient, saving your crews valuable time and money. Featuring top-quality materials and construction and an ergonomic, easy-to-use design, our full line of hose reels can meet virtually any need, in both mounted and trailer models.

Benefits:

Efficiency—Hose reels let you put the hose where you need it, when you need it... improves efficiency and reduces clutter

Economy—Tests prove hoses that are properly stored on a reel will last 5 to 7 times longer...reduces downtime and replacement costs

Ergonomics—Hose reels make handling easier and more comfortable for workers over the course of a long day...provides low hose tension during pullout and controlled return speed

Safety—Hose reels keep hose out of the way when not in use...eliminates tripping and safety problems

Features:

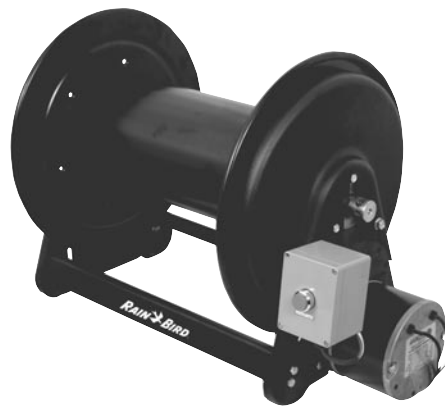
- Durable abrasion & corrosion resistant baked-on powder coat paint is standard on all painted models. Each component is individually painted
- Full flow shaft and ball bearing swivel assures maximum product delivery

Models:

Heavy-Duty Hose Reel—Designed for heavy-duty applications requiring long hose lengths.

- Adjustable spool rotation eliminates hose backlash when de-reeling
- Zinc-plated swivel with VITON® "O" ring seals
- Permanently lubricated dual main bearings
- Motor mounting at either end of the reel
- All bolted construction – no welds
- Lock pin prevents spool rotation when the reel is not in use
- Vibration-proof self-locking fasteners ensure assembly integrity

- Manual driven reels are easily converted to power driven reels
- Unitized spool construction
- Steel drum
- Available in hand crank or motor drive models
- Includes 10' connecting hose only



Rain Bird Heavy-Duty Hose Reel

Spring Driven Reel—Incorporate contemporary engineering and construction for the ultimate in trouble-free performance. Ideal for applications with critical space requirements.

- Guide is field adjustable for wall, ceiling or truck mounting positions
- Heavy-duty brackets eliminate bending due to angular hose pull
- Banded drive springs give smooth, automatic hose retrieval
- Multi-position guide arms permit wall, floor, ceiling, pit or truck mounting
- All reels are permanently factory lubricated
- Reliable latch will maintain the desired working length of hose. Our mechanism assures a positive latch or unlatch of the hose
- Adjustable hose bumpers allow any desired length of hose to be maintained outside the reel
- Nylon guide rollers reduce hose drag and abrasion

- Declutching spring arbor drive eliminates the possibility of spring damage due to reverse winding of the reel spool
- Includes air/water hose only



Rain Bird Spring Driven Reel

Poly Hose Reel—Lightweight and easy to handle, meets the needs for continuous, problem-free operation. Highly resistant to acids and alkalis.

- Spring retraction
- Lightweight and portable
- Virtually maintenance free
- Tough, U.V. stabilized outer case
- Simple and reliable latch mechanism
- Spring tension easily adjusted
- Corrosion proof
- Pivoting wall bracket included
- Includes air/water and 4' connecting hose



Rain Bird Poly Hose Reel



Towable Hose Reel Trailer

Towable Hose Reel Trailer—Ergonomic design and rugged construction makes hose handling easier, quicker and more efficient.

- Easily attaches to most off-road golf work vehicles or carts with clevis pin hitch
- 40" x 40" heavy gauge steel bed is predrilled for Heavy Duty hose reels
- Additional space for tool trays and accessories
- Dual tapered automotive style bearings and solid steel axle for smooth, reliable operation
- Pneumatic tires and high quality wheels are recessed under trailer bed to eliminate snagging of trees and shrubs
- Extra long 32" trailer tongue allows for sharper turns and easier back up
- Maximum weight capacity is 400-lbs. 15-mph maximum speed
- **For off-road use only. No riders.**

• Specifications:

Model T4040: Trailer includes Model H100-100 hand rewind hose reel, less hose

**Roller bracket, 3-way (upper)
1" I.D. x 10' connecting hose**

Model T4040M: Trailer includes Model H100-100M motor drive hose reel, less hose

Switch, complete

Battery box

Roller bracket, 3-way (upper)

Chain guard

1" I.D. x 10' connecting hose

Electric Cord Reel—Compact, electric cord reels are ideal for indoor applications where space is critical.

- Spring retractable with latch
- Designed for wall, ceiling or bench mounting
- Features adjustable cord stop
- Includes pigtail and three-prong, grounded plug
- Specifications:

Model E045-115: Single Receptacle

Cord Specifications:

AWG: 12 (3.32 mm²)

No. Cond.: 3

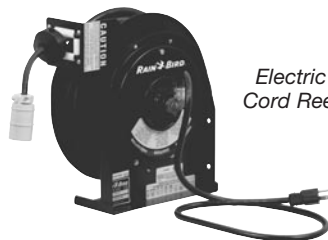
Length: 45' (14 m)

Type: SJO

Volts: 115

AMPS: 15

Weight: 23 lbs. (11 kg)



Electric Cord Reel



Composite Hose Reel

Composite Hose Reel—Hybrid design incorporates industrial grade steel with engineered composite components. Ideal for applications that are less demanding.

- Base and arm feature heavy gauge steel stampings with reinforced ribs for structural integrity
- Glass-filled composite spool and spring case contain industrial grade drive spring
- Latch mechanism is mounted on arm to insure hose latch-out will not occur
- Long-lasting torsion spring and swivel ensures maximum life
- All steel components are powder coated to virtually eliminate corrosion
- Includes air/water hose only

Rain Bird Hose Reel Dimensions

MODEL #	HOSE I.D. in./mm	HOSE O.D. in./mm	CAPACITY ft./m	WEIGHT W/O HOSE lbs./kg	WEIGHT W/ HOSE lbs./kg	PRESSURE psi/bar
Heavy Duty						
H175-075	.75/19	1.188/30,2	175/54	54/25	-/-	1000/69
H100-100	1/25,4	1.5/38,1	100/30	58/26	-/-	300/21
H100-100M	1/25,4	1.5/38,1	100/30	75/34	-/-	300/21
Spring Driven						
S050-038	.375/10	.640/16	50/15	-/-	37/17	300/21
S050-050	.5/13	.844/22	50/15	-/-	51/23	300/21
S025-075	.75/19	1.188/31	25/8	-/-	52/24	250/18
S050-075	.75/19	1.188/31	50/15	-/-	89/41	250/17
Poly						
P050-050	.5/13	.781/20	50/15	-/-	21.5/10	138/10
Composite						
C025-038	.375/10	.640/16	25/8	-/-	18.8/9	300/21
C050-038	.375/10	.640/16	50/15	-/-	26.1/12	300/21

**Rain Bird Corporation
Golf Division**

6991 E. Southpoint Rd. Bldg. #1, Tucson, AZ 85706

Phone: (800) 984-2255; (520) 741-6100

Fax: (520) 741-6522

E-mail: rbgolf@rainbird.com

Rain Bird International, Inc.

145 North Grand Avenue, Glendora, CA 91741

Phone: (626) 963-9311

Fax: (626) 963-4287

www.rainbird.com

The Intelligent Use of Water.™—Visit www.rainbird.com to learn more about our efforts.

© Registered trademark of Rain Bird Sprinkler Corp.
© 2003 Rain Bird Sprinkler Mfg. Corp. 11/03