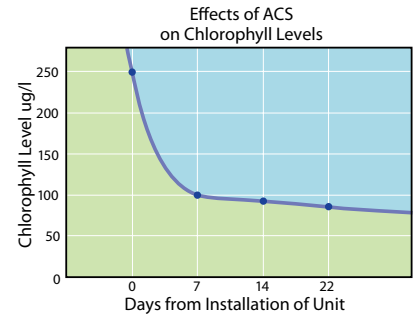
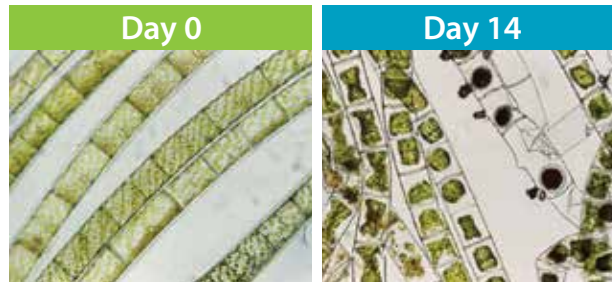


Rain Bird® Algae Control System™ (ACS)

How it Works

The ACS transducer, submerged just beneath the surface, is programmed to generate ultrasonic waves that inhibit the growth and spread of algae.

ACS Effect on Algae



Placement Options

The ACS Algae Control device emits directional ultrasonic waves that “fan out” at approximately 180° from the front of the transducer (See Figure 1). It is important to install your device to provide the optimal exposure of the ultrasonic waves to the body of water you are treating. You should position the unit in a minimum of 2’ of water, close to the edge of the water to minimize the area behind the unit that will not receive the ultrasonic waves.

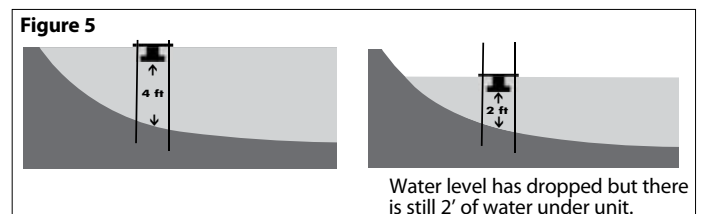
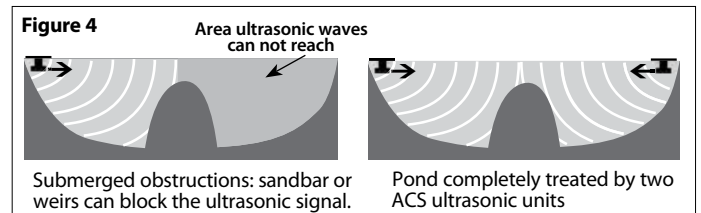
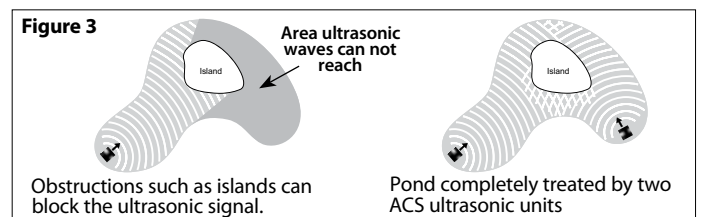
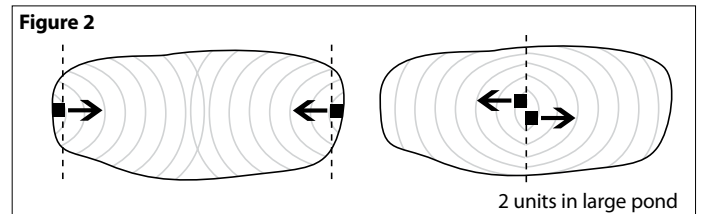
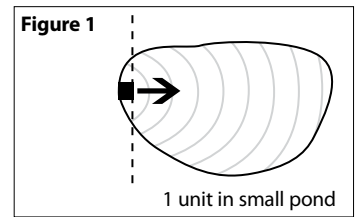
Large installations and certain shapes of ponds or lakes may require installation of more than one device. Multiple devices can be installed at opposite sides of a lake or pond or attached together pointing in different directions, depending on your site requirements (See Figure 2).

The ACS device, like all ultrasonic devices, is a “line of sight” technology. Ultrasonic sound waves will not go around corners or navigate around islands that may be in your body of water. Ultrasonic sound waves reflect or bounce off of hard surroundings, such as concrete, rip-rap, and large rocks, islands, as well as submerged obstructions such as sandbars and weirs. Even thick weeds can block or degrade the signal strength. (See Figures 3 and 4).

Make sure that the placement of the device takes into account any potential reductions in the water level. You must have a minimum of 2’ of water at all times. (See Figure 5)

Need help?

For FREE placement assistance email us at algaecontrol@rainbird.com. Make sure that your site-plan includes accurate dimensions and shape configurations of your water site. Also make sure that you identify and locate any submerged obstructions on your plans.



TECHNICAL SPECIFICATIONS EPA Registration #074929-MA-001

Models	Power Input		UL Approved Power Supply	NSF Certification	Range*	Coverage*
RBACS400	US 120V AC, 60 Hz, 60 W	EU/UK 240V AC, 50 Hz, 60 W	RBAC-PSUP / RBAC-PSUPR	NSF/ANSI 61 & 372	400 ft/121.92 m	up to 2 acres
RBACS400AC	US 24V AC, 1 Amps Max**	EU/UK 24V AC, 1 Amps Max	—	NSF/ANSI 61 & 372	400 ft/121.92 m	
RBACS400DC	US 24V DC, 1 Amps Max***	EU/UK 24V DC, 1 Amps Max	—	NSF/ANSI 61 & 372	400 ft/121.92 m	
RBACS500	US 120V AC, 60 Hz, 60 W	EU/UK 240V AC, 50 Hz, 60 W	RBAC-PSUP / RBAC-PSUPR	NSF/ANSI 61 & 372	500 ft/154 m	up to 6 acres
RBACS500AC	US 24V AC, 1 Amps Max**	EU/UK 24V AC, 1 Amps Max	—	NSF/ANSI 61 & 372	500 ft/154 m	
RBACS500DC	US 24V DC, 1 Amps Max***	EU/UK 24V DC, 1 Amps Max	—	NSF/ANSI 61 & 372	500 ft/154 m	
RBACS600	US 120V AC, 60 Hz, 60 W	EU/UK 240V AC, 50 Hz, 60 W	RBAC-PSUP / RBAC-PSUPR	NSF/ANSI 61 & 372	600 ft/182 m	up to 8 acres
RBACS600AC	US 24V AC, 1 Amps Max**	EU/UK 24V AC, 1 Amps Max	—	NSF/ANSI 61 & 372	600 ft/182 m	
RBACS500DC	US 24V DC, 1 Amps Max***	EU/UK 24V DC, 1 Amps Max	—	NSF/ANSI 61 & 372	600 ft/182 m	

* Range and coverage depends on location and conditions.

** 24 volt AC units are compatible with any 24 volt AC low voltage lighting or irrigation power source.

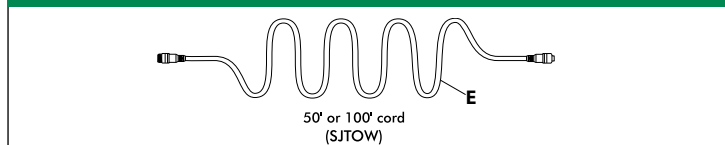
*** 24 Volt DC units are compatible with any 24 volt DC power source.

The Rain Bird Solar Power System, which includes two batteries, may be purchased separately

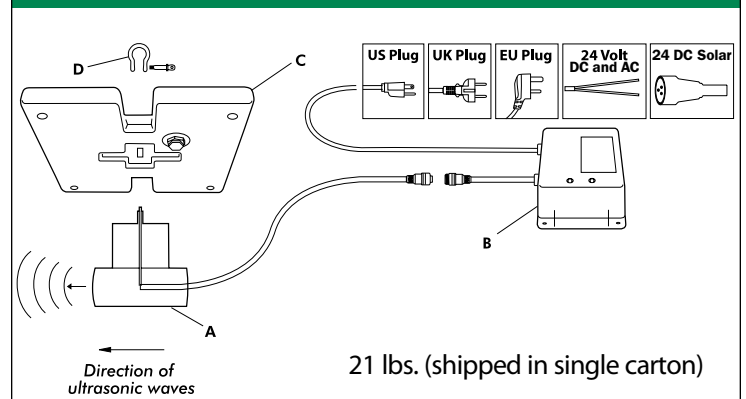
ACS Parts and Dimensions

A. Transducer	length: 8", diameter: 3", height: 9", cord length: 50'
B. Power Supply Box	depth: 2.5", length: 7.75", width: 4.5", cord length: 6' (US & EU); 5' (UK)
C. Float* (optional with RBACS100 and RBACS200)	15" x 15" x 1.5" with four .75" tie down holes and two 2" x 3.5" slots for stakes
D. Float Shackle*	length: 1.5", stainless steel
E. 50' or 100' cord (purchase separately)	50' or 100' transducer extension cord (SJTOW) with waterproof connectors
F. Solar Power System (purchase separately)	includes solar panel, control box, wiring, pole, mounting brackets and two batteries. Note: systems are sized for specific site
G. RBACSMETER dB Meter (purchase separately)	for measuring strength of ultrasonic signal: length: 8.5", width: 5.5", height: 3.5", runs on two 9 volt batteries
H. Sled Mount Kit (purchase separately)	for use in lined water sites (includes one sled base; two mounting poles; and two brass sliding-bolts)

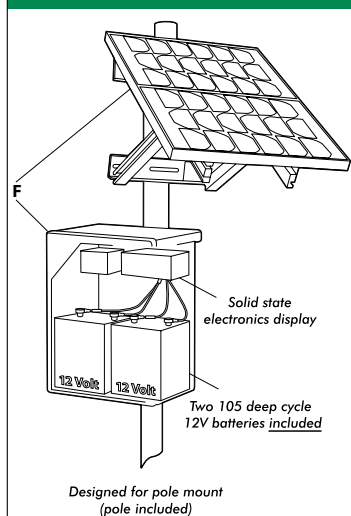
TRANSDUCER EXTENSION CORD



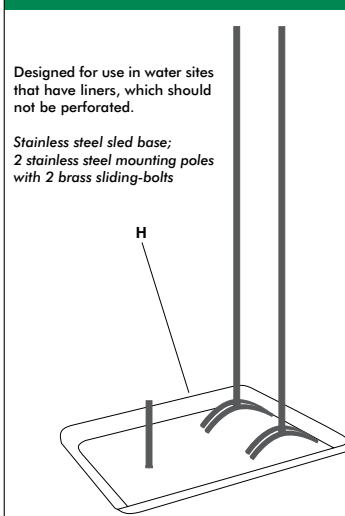
RBACS400 • RBACS500 • RBACS600



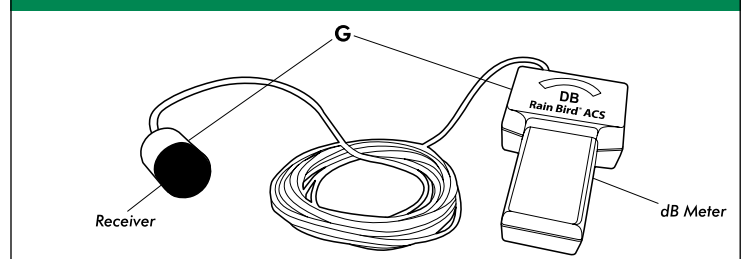
SOLAR UNIT



SLED MOUNT KIT



RBACSMETER dB METER



Illustrations not drawn to scale

Rain Bird Corporation
6991 E. Southpoint Road
Tucson, AZ 85756
Phone: (520) 741-6100
Fax: (520) 741-6522

Rain Bird Corporation
970 West Sierra Madre Avenue
Azusa, CA 91702
Phone: (626) 812-3400
Fax: (626) 812-3411

Rain Bird International, Inc.
1000 West Sierra Madre Ave.
Azusa, CA 91702
Phone: (626) 963-9311
Fax: (626) 852-7343

Rain Bird Technical Services
(800) RAINBIRD (1-800-724-6247) (U.S. and Canada)

Specification Hotline
800-458-3005 (U.S. and Canada)

The Intelligent Use of Water™
www.rainbird.com