



Tudor-Style Home in San Mateo, California

Classic English Garden Flourishes with Help from Efficient Rain Bird® Technology

Located in Northern California's opulent San Mateo area, this Tudor-style home was built in 1928. The homeowners have partnered with Proven Winners® ColorChoice® and Michael Galli of Metamorphosis Landscaping to correct a backyard erosion issue and create a classic English garden they can enjoy with family and friends.

THE CHALLENGE

Remediation of the erosion leaves just 6 to 24 inches of topsoil so Michael Galli will need to be very strategic with the landscape design. Since water is scarce and expensive in Northern California, plants should be drought-tolerant and the irrigation system must be highly efficient. The homeowners have also requested that the system have intelligent automations to compliment their SMART home.

THE SOLUTION:

Michael Galli's landscape plan includes distinct outdoor spaces for entertaining, gardening, hot tubbing, and more. To maximize the available topsoil and water, he will rely on two best-in-class solutions: Proven Winners® ColorChoice® plants and an intelligent Rain Bird® irrigation system. He will also use custom-made bottomless urns to create additional growing space.



R-VAN Rotary Nozzles

KEY OBJECTIVES

- ✓ Create a Beautiful Outdoor Space
- ✓ Make Use of Shallow Topsoil
- ✓ Optimize Water Usage
- ✓ Automate Irrigation

Core Products Used:

- R-VAN Rotary Nozzles
- 1800° Series PRS Sprays
- Xeri-Bird 8 Multi-Outlet Drip Emission Device
- SQ Series Square Pattern Nozzles
- Root Watering System



Site Report: **Tudor-Style Home in San Mateo, California**

Classic English Garden Flourishes with Help from Efficient Rain Bird® Technology

APPROACH:

Choose Ideal Plants

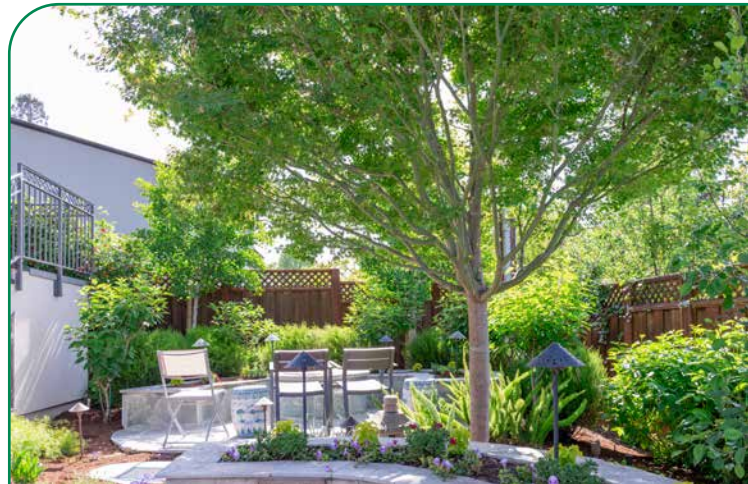
Jane Beggs-Joles of Proven Winners® ColorChoice® will help Michael Galli select plants that will thrive with minimal water and soil. Hydrangeas, azaleas, lilacs, astilbe, and Japanese maples will bring the feel of a classic English garden to Northern California. A smart irrigation system will help these top-quality plants get established and perform at their best.

Customize Unique Spaces

As a Gold-level Rain Bird Select Contractor for more than 35 years, Michael Galli will customize the Rain Bird system to water each of the garden's different "rooms" efficiently. **R-VAN Rotary Nozzles** combined with **1800® Series PRS Sprays** will irrigate the smaller areas and uniquely-shaped beds using 30% less water than alternatives. **SQ Series Square Pattern Nozzles** will water the flower boxes with flows that can be adjusted as plants grow. A **Xeri-Bird™ 8-Outlet Emission Device** connected to Rain Bird **Root Watering Systems (RWS)** will deliver water directly to the roots of roses, shrubs, and trees, including those growing in urns.



Thanks to a **WiFi-enabled Rain Bird system controlled through the Rain Bird app**, irrigation will largely be left on autopilot.

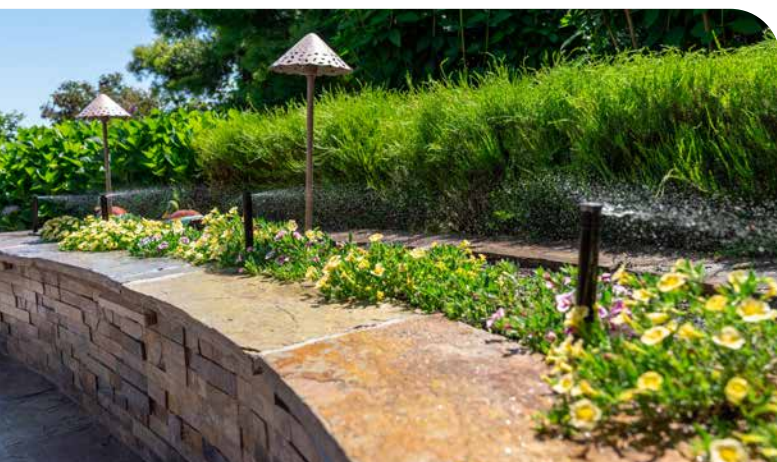


"Almost everything in the house is controlled by some sort of Alexa or Google product...the reason why these apps are important is we can share them with people who work on our home."

CHRIS YEH
HOMEOWNER

Enable Easy Automation

An added benefit of the Rain Bird system will be the ability to automate and control watering via a smartphone. Irrigation will largely be left on autopilot. Manual watering or adjustments for new plantings can be made via the **Rain Bird app**. This innovative solution will satisfy the tech-savvy homeowner and control can be conveniently shared with any contractors working on the property.



Site Report: **Tudor-Style Home in San Mateo, California**

Classic English Garden Flourishes with Help from Efficient Rain Bird® Technology



RESULTS:

Beauty Indoors and Out

With a winning combination of high-quality plants and efficient irrigation, this classic English garden is flourishing. Homeowners enjoy its beauty even from inside their home. They also appreciate the convenient automation of the entire irrigation system. **The plants are doing so well, the homeowners even received an award for the Best Maintained Garden from the local neighborhood association!**

"A lot of the plants we were putting in were drought resistant...we knew that would also minimize the amount of water needed to be delivered. Knowing there was a sophisticated system coming in place to be able to deliver the right amount of water to the right plant at the right time made it work out for us!"

CHRIS YEH
HOMEOWNER

