

SQ Series Nozzle with $\frac{3}{4}$ Square Pattern

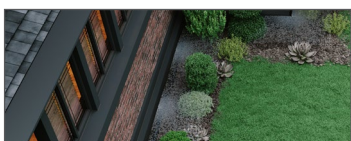
Precise and efficient, low-volume spray nozzle for irrigation around the perimeter of trees or shrubs.



SQ Series Nozzle with $\frac{3}{4}$ Square Pattern is pressure compensated ensuring a precise and efficient, low-volume spray for surface watering the perimeter of trees and shrubs, while avoiding the trunk. With the unique edge-to-edge pattern, coverage is achieved with only two nozzles,

making them a cost effective solution. Each nozzle can easily switch between a 2.5 ft. or 4 ft. throw to accommodate growth of the canopy over time.

With multiple installation configurations, this product is a versatile option for low volume applications.



Garden Beds



Sidewalks



Medians



Trees

Unique Pattern for Trees

- Designed to precisely irrigate around the perimeter of trees and shrubs.
- Also great for corners in narrow planting beds, parking lot islands, walkways, parkways, and street medians

Versatile Installations

- Simplify design and installation with the flexibility of applications
- One nozzle throws 2.5' or 4' (0.8 m or 1.2 m)
- Can be installed on a variety of spray heads and risers

Savings - Water and \$

- Meets micro irrigation system requirement with less than 26 gph flow rate at 30 psi
- Unique edge-to-edge capability reduces the number of nozzles needed, which decreases cost and dramatically reduces installation time
- Square spray pattern and pressure compensation offer increased efficiency and control, reducing overspray, property damage, and liability



SQ Series Nozzles with ¾ Square Pattern



Installation Options:



SQ Nozzle on PolyFlex Riser Assembly (PFR-FRA)



SQ Nozzle on 1800 Spray Body Assembly



SQ Nozzle on Schedule 80 Riser Assembly

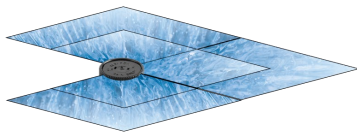


SQ Nozzle on Poly Flex Riser and Stake Assembly (PFR-RS)

Models:



Model: 3QTR
Three Quarter Wetting Pattern



Nozzle Accessories

- **PFR-12:** 12" PolyFlex Riser (riser tube only)
- **PFR-FRA:** 12" (30.5 cm) PolyFlex Riser and ½" adapter for PVC (SQ-ADP Nozzle Adapter sold separately)
- **PFR-FRA24:** 24" (61.0 cm) PolyFlex Riser and ½" adapter for PVC (SQ-ADP Nozzle Adapter sold separately)
- **PFR-RS:** 12" (30.5 cm) PolyFlex Riser and 7" (17.8 cm) stake
- **SQ-ADP:** SQ Nozzle *adapter only* (Connects SQ Nozzles to PolyFlex Risers)
- **SQ-ADP12:** SQ Nozzle adapter with 12" PolyFlex Riser
- **XQ-100:** ¼" Distribution tubing for PFR-RS Riser

Operating Ranges:

- **Flow Rates:** 6, 12, 18, and 24 gph (22.7, 45.4, 68.1, and 90.8 l/hr)
- **Pressure:** 20 to 50 psi (1.4 to 3.5 bar)
- **Required Filtration:** 40 mesh



rainbird.com

® Registered trademark of Rain Bird Corporation

© 2021 Rain Bird Corporation 10/21

D42031