



# ESP-LXME Controller Quick Reference Guide

-  PMS 348 + HALFTONES
-  BLACK + HALFTONES

## STEPS REQUIRED FOR OPERATION:

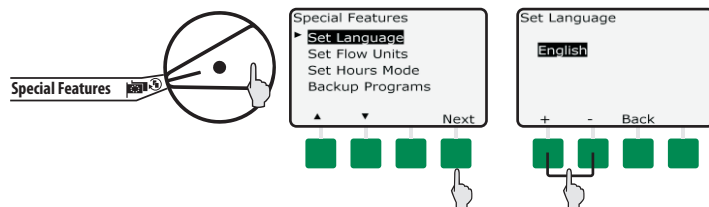
1. Watering Start Times
2. Days To Water
3. Station Run Times

To verify: turn dial to Test All Stations / Check System, select Confirm Programs and review the Program Summary.

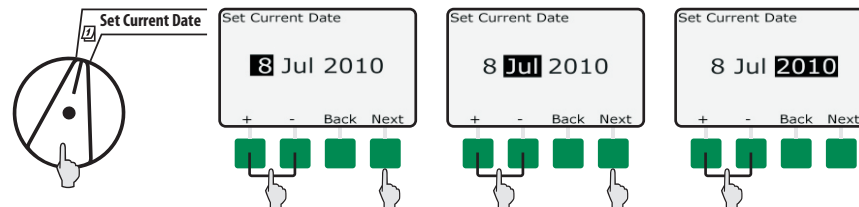
**Programming Questions?**  
**Call 1-800-RAINBIRD**  
[www.rainbird.com/ESPLXME](http://www.rainbird.com/ESPLXME)

### Basic Programming

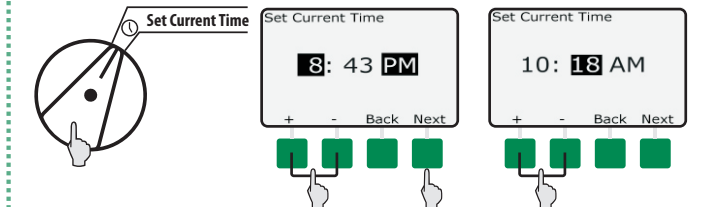
#### 1 Set Language



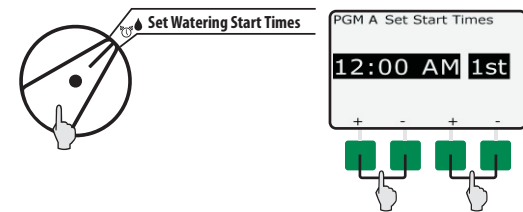
#### 2 Set Current Date



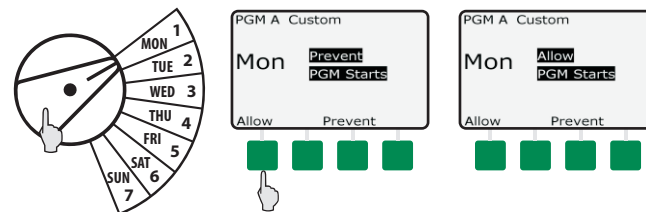
#### 3 Set Current Time



#### 4 Set Watering Start Times



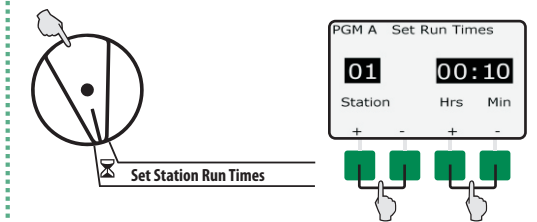
#### 5 Set Days To Water - Custom Cycle



#### OR Watering Day Cycles

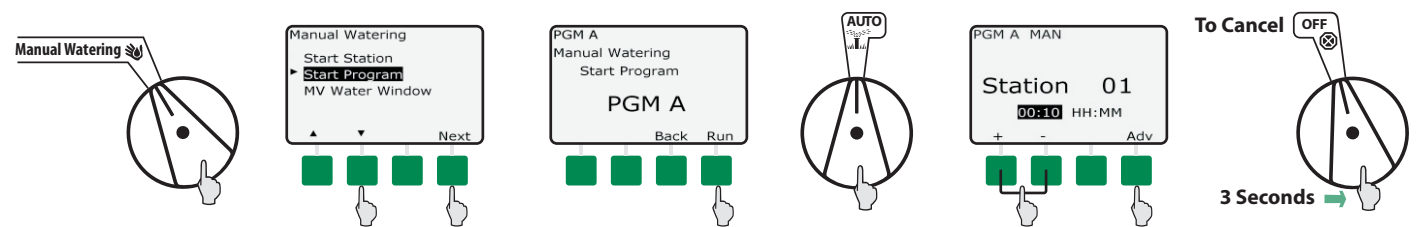
- CUSTOM
- ODD
- ODD31
- EVEN
- CYCLI CAL

#### 6 Set Station Run Times

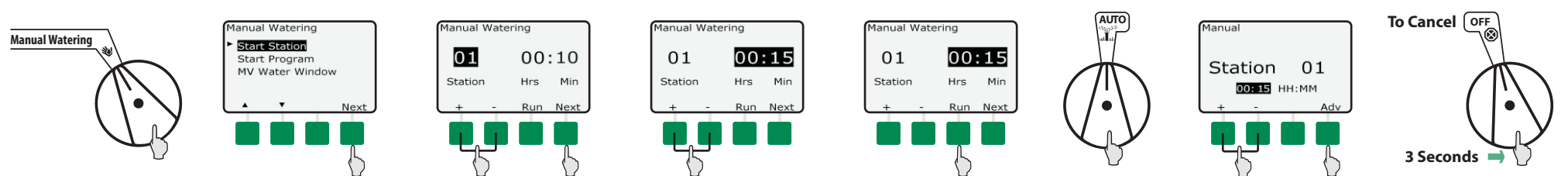


### Manual Watering Options

#### Manual Watering Start Program

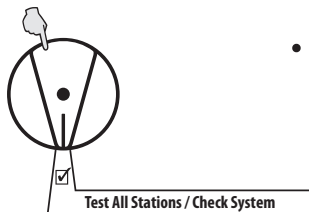


#### Manual Watering Start Station

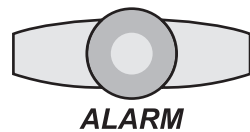


### Troubleshooting

#### Test All Stations / Check System



- Confirm Programs
  - Program Summary
  - Review Program
  - Program Run Time
  - Station RunTime
- Test All Stations
- Raster Wiring Test



**ALARM**

Alerts user to conditions that prevent watering. See the Alarm button in the Auto dial position for alarm messages.

Alarm Message	Action
Station Short	Run Raster Test - turn dial to Test All Stations.
No Modules or No Base Module	Check / reinsert modules.
Flow Alarm (only if optional Flow Smart Module is installed)	Turn dial to Module Status and select View Flow Alarms.

Station and Base Module LED	
Flashing (red)	Module not recognized - reinstall. Station Short - run Raster Test.
Solid (red)	Recognizing module properly. Programming a station. Station is currently running.
LED not lit (dark)	No controller power. No station activity - check Run Time, Start Time and/or Days to Water. Module not recognized - reinstall.

Optional Flow Smart Module LED	
Flashing (blue)	Active flow being monitored by flow sensor.

For Advanced Programming Options, refer to the ESP-LXME Controller Manual

